

# LMTR SERIES

ALUMINIUM SYSTEMS  
FOR SLIDING DOORS  
DRAGGING SYSTEM





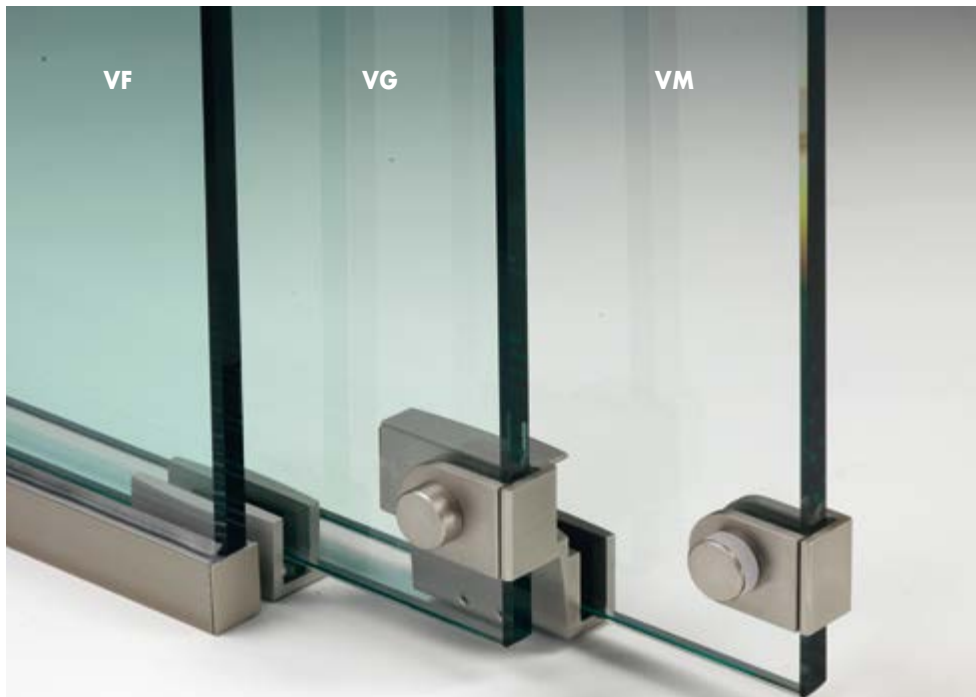
TECHNICAL GUIDE AVAILABLE ON:  
[www.loglimassimo.it](http://www.loglimassimo.it)

## LMTR SYSTEM FOR 2 PANELS DRAGGING

Ceiling **mounted sliding system with 2 panels dragging system** and with option of **fixed glass**. Unique design, whose feature is to provide everything required to support 10mm-thick glass doors with 100kg Max capacity per door in little space. Swiss ECU accessories and accessories of our own production such as the clamps Art. CERPOS170COV and the accessories Art.LMTR2 are assembled.

The system **can include** soft closing mechanisms (Dämpfung)

Spanner to insert LMTR dragging accessories on page 24



### LH ASSEMBLY

- VF = Fixed Glass
- VG = Glass on Guide
- VM = Glass with Handle

PATENTED  
SYSTEM



### LH ASSEMBLY



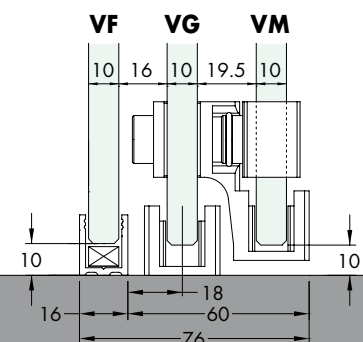
RH kit photo

## DRAGGING ACCESSORY FOR 2 PANELS

Material: aluminium

Features: kit of dragging accessories for 2 panels. It allows the doors to fully overlap, positioning them perfectly aligned flush with the fixed glass. When opening and closing, the sliding doors are hooked together thanks to the innovative system with sealing ring.

Finish: matt aluminium, polished aluminium, brushed stainless steel-effect aluminium



Art.	Description	Glass	Q.ty
LMTR2DX	Right - RH	10 mm	1 Set
LMTR2SX	Left - LH	10 mm	1 Set



## LMTR ACCESSORIES SET FOR GLASS PANE MAX 100 KG THICKNESS 10 mm

Material: CNC machined aluminium clamps, PVC gaskets.

Set consisting of: 2 carriages with screw, 2 clamps with cover, 2 locking stops.

Finish: matt aluminium, polished aluminium, brushed stainless steel-effect aluminium

Art.	Description	Q.ty
LM2950C	LMTR set for glass pane 10 mm thick	1 Set



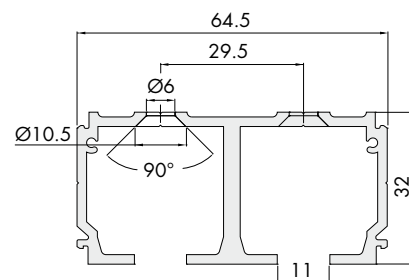
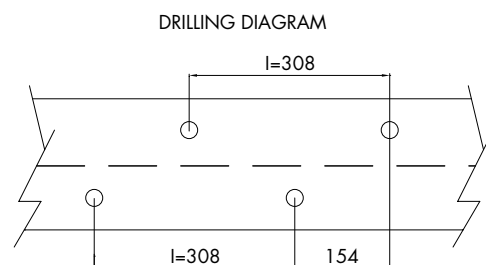
## LM51 PRE-DRILLED ALUMINIUM DOUBLE TRACK

Material: aluminium

Features: pre-drilled double aluminium track for ceiling fixing

Finish: matt aluminium, polished aluminium, brushed stainless steel-effect aluminium

**Important: polished aluminium only length 2000, 3000, 4000 mm**



Art.	Description	No. of holes	Q.ty
LM51,200	LM51 Double track length 2000 mm	13	1 Pc
LM51,300	LM51 Double track length 3000 mm	19	1 Pc
LM51,400	LM51 Double track length 4000 mm	26	1 Pc
LM51,600	LM51 Double track length 6000 mm	39	1 Pc



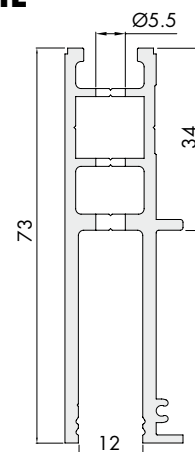
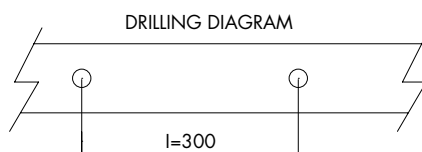
## LM41 PRE-DRILLED ALUMINIUM FIXED PROFIL

Material: aluminium

Features: aluminium profile for wall and ceiling mounting.

Finish: matt aluminium, polished aluminium, brushed stainless steel-effect aluminium

**Important: polished aluminium only in lengths 2000, 3000, 4000 mm**



Art.	Description	No. of holes	Q.ty
LM41,200	Fixed profile LM41 length 2000 mm	6/7	1 Pc
LM41,300	Fixed profile LM41 length 3000 mm	10	1 Pc
LM41,400	Fixed profile LM41 length 4000 mm	13/14	1 Pc
LM41,600	Fixed profile LM41 length 6000 mm	20	1 Pc

## FIXED BOTTOM U PROFILE

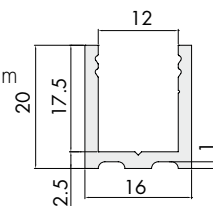
Material: aluminium

Features: profile with 3000/1498 mm long squared edges and guide line to help drilling.

Finish: matt aluminium, brushed stainless steel-effect aluminium, polished aluminium



End caps for U profile  
**LMU20TP**



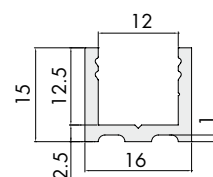
Art.	Description	Q.ty
<b>LMU20,150</b>	"U" profile length 1498 mm	1 Pc
<b>LMU20,300</b>	"U" profile length 3000 mm	1 Pc
<b>LMU20TP</b>	"U" profile caps 20 x 16 x 1 mm	1 Pc

## OFFSETTING SIDE PROFILE FOR FIXED GLASS

Material: aluminium

Features: 3000 mm long aluminium profiles with square edges and guide line to help drilling.

Finish: matt aluminium, brushed stainless steel-effect aluminium, polished aluminium



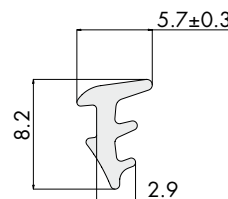
Art.	Description	Q.ty
<b>PBD3185</b>	U-section adjustment profile length 3000 mm	1 Pc

## GASKET PROFILE

Material: PVC

Features: PVC gasket to be inserted in the "U" profile Art. LMU20 and fixed profile Art. LM41.

Finish: transparent, embossed



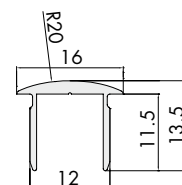
Art.	Description	Finish	Q.ty
<b>GTUP2</b>	Transparent gasket - Thickness 2 mm	Transparent	1 m
<b>GTUP2300</b>	Transparent gasket - Thickness 2 mm - 300 m ROLL	Transparent	1 Set
<b>GTUP2G</b>	Embossed gasket - Thickness 2 mm	Embossed	1 m
<b>GTUP2300G</b>	Embossed gasket - Thickness 2 mm - 300 m ROLL	Embossed	1 Set

## PBD3184 ALUMINIUM FINISHING PROFILE

Material: aluminium

Features: upper radial profile for exposed parts without glass for use in combination with the fixed profile LM41.

Finish: matt aluminium, brushed stainless steel-effect aluminium, polished aluminium



Art.	Description	Dimensions	Q.ty
<b>PBD3184,100</b>	Upper radial profile	992 mm x 13.5 mm x 16 mm	1 Pc
<b>PBD3184,150</b>	Upper radial profile	1498 mm x 13.5 mm x 16 mm	1 Pc
<b>PBD3184</b>	Upper radial profile	3000 mm x 13.5 mm x 16 mm	1 Pc



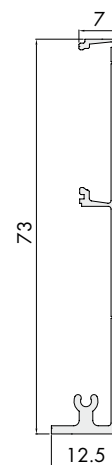
## LM3130 HIGH ALUMINIUM COVER

Material: aluminium

Features: high clamp cover for rails LM21 - LM31 - LM51 - LM61

Finish: matt aluminium, polished aluminium, brushed stainless steel-effect aluminium

**Important: polished aluminium only in lengths 2000, 3000, 4000 mm**



Art.	Description	Q.ty
<b>LM3130,200</b>	LM3130 high cover length 2000 mm	1 Pc
<b>LM3130,300</b>	LM3130 high cover length 3000 mm	1 Pc
<b>LM3130,400</b>	LM3130 high cover length 4000 mm	1 Pc
<b>LM3130,600</b>	LM3130 high cover length 6000 mm	1 Pc



## DÄMPFUNG

Material: ABS + zamak + steel

Features: soft stop complete with accessories for one door.

Assembly instructions inside the package.

Hydraulic clamber tested for 100,000 cycles.

Art.	Description	Q.ty
<b>042,3102,071</b>	DÄMPFUNG - Soft closing mechanism from 61 to 100 kg	1 Pc
<b>042,3102,072</b>	DÄMPFUNG - Soft closing mechanism from 20 to 60 kg	1 Pc

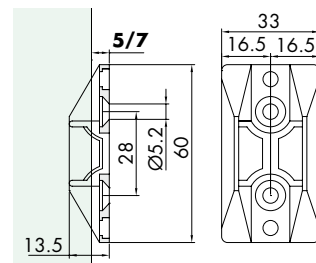


## "U" WALL MOUNTED DOOR STOP WITH CENTRING

Material: ABS

Features: wall panel door stop.

Finish: white



Art.	Description	Finish	Q.ty
<b>HW,18619</b>	Door stop	White	1 Pc

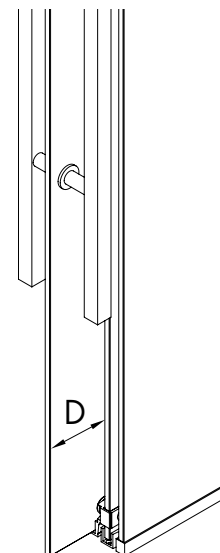
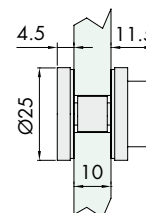
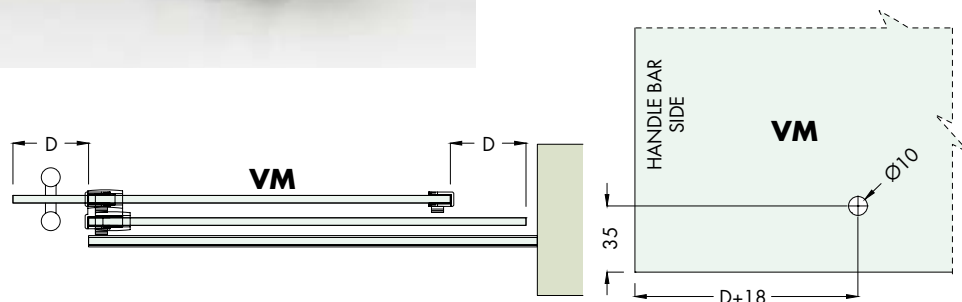


## DRAGGING ACCESSORY WITH HANDLE BAR

Material: aluminium

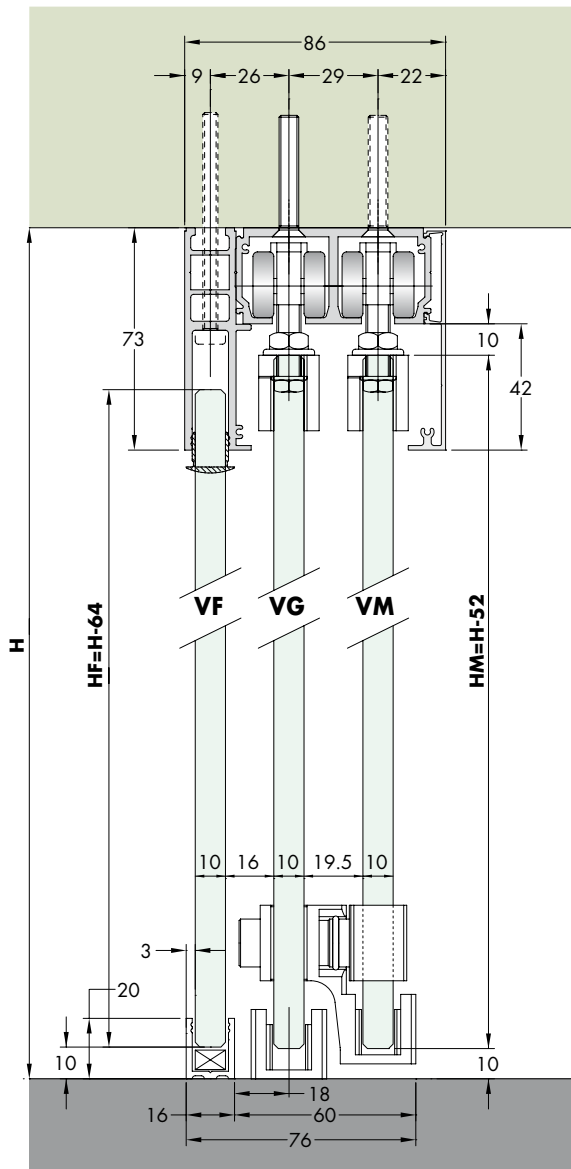
Features: aluminium accessory to be used as spacer when using a handle bar along with the dragging kit.

Finish: matt aluminium, polished aluminium, brushed stainless steel-effect aluminium

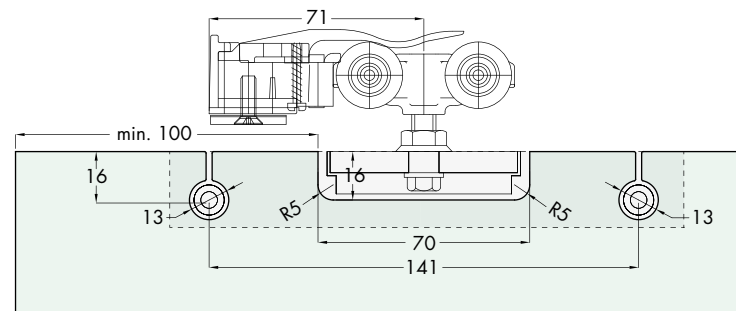


Art.	Description	Glass Hole	Q.ty
<b>LMPO</b>	Handle bar spacer	Ø 10 mm	1 Pc

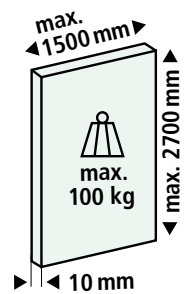
## TYPE A: 2 sliding doors + fixed glass solution (left mounting)



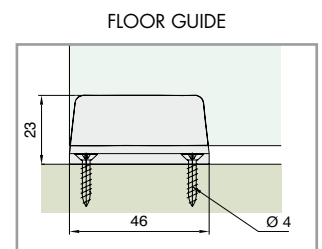
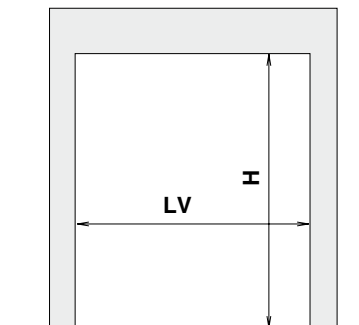
RECOMMENDED GLASS 10 mm TEMPERED



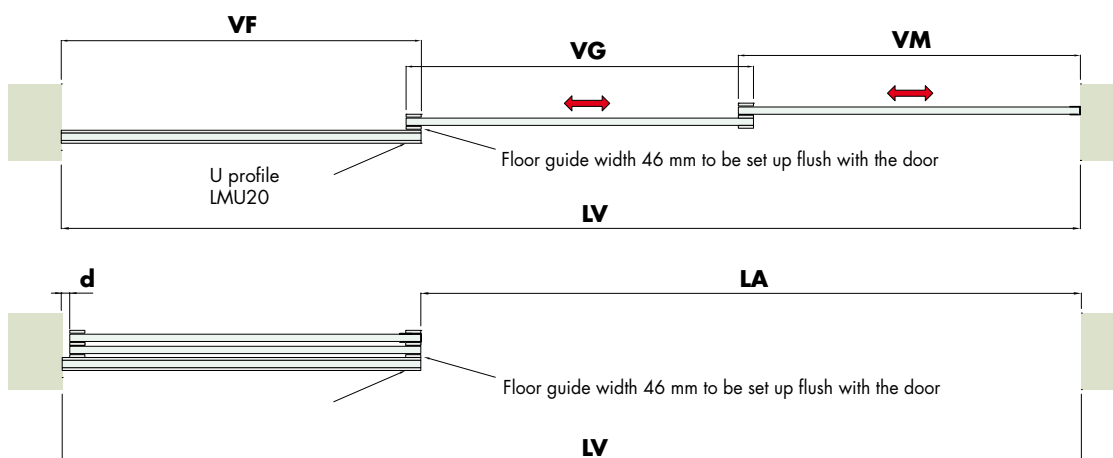
GLASS DRILLING DIAGRAM



**H** = door-opening height  
**HM** = sliding glass height  
**HF** = fixed glass height



## 2 sliding doors + fixed glass solution (left mounting) Closing with MSC7 type door dragging ring or handle.



$$VM = VG = \frac{LV \cdot d}{3} + 29$$

$$VF = VM + d$$

$$LA = LV - VF$$

$$d = 5\text{mm MINIMUM}$$

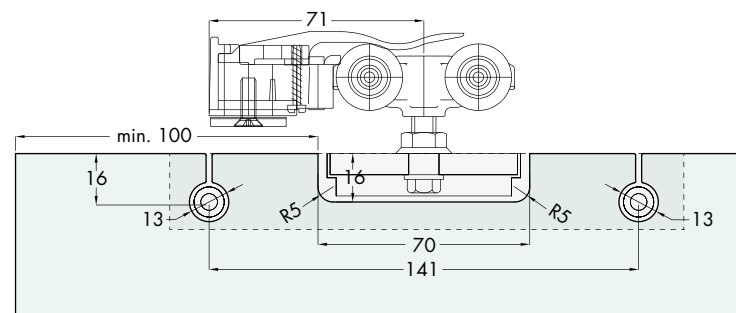
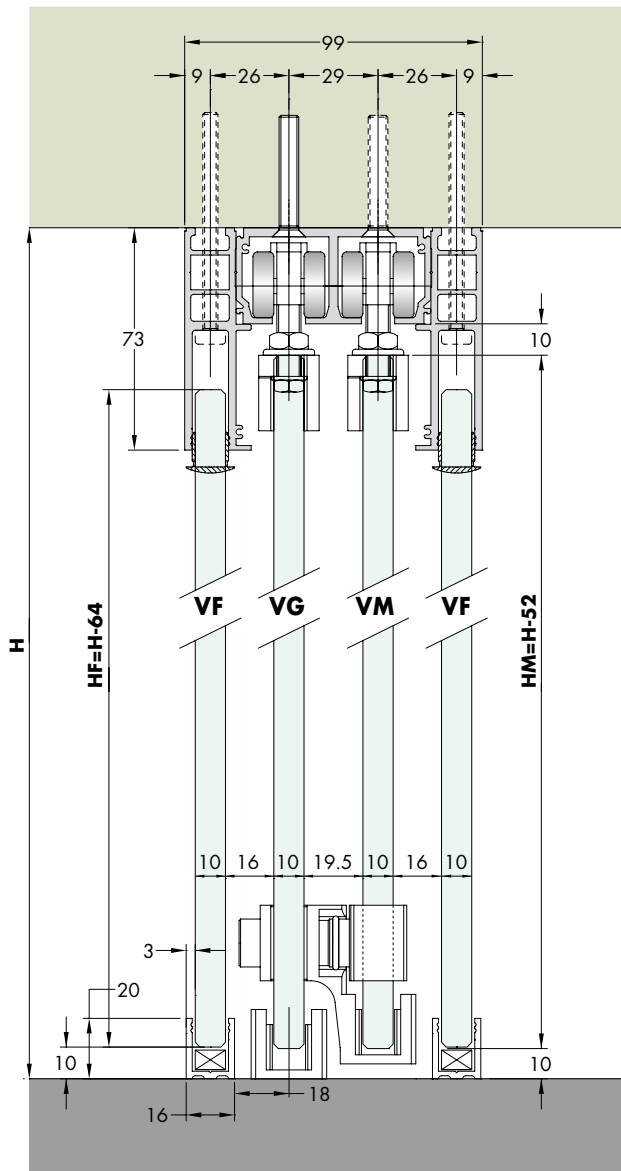
**VM** = Glass with handle width  
**VG** = Glass on guide width  
**VF** = Fixed glass width  
**LV** = Door-opening width  
**LA** = Opening width

### IMPORTANT:

- If walls are out of plumb, that can influence the calculation **VF**! Increase "**d**" distance as needed to compensate the out of plumb
- When using a handle bar, a correct distance **D** from the glass edge must be considered by using Art. LMPO (See page 476)

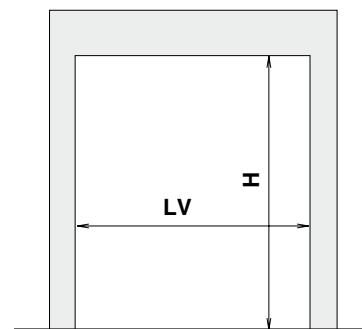
**Example:** for **LV**=3000mm  
**d**=5mm  
**VM**=**VG** = [(3000-5)/3]+29 = 1027mm  
**VF**=1027+5=1032mm  
**LA**=3000-1032=1968mm

### TYPE B: 2 sliding doors + double fixed glass solution for parking (left mounting)

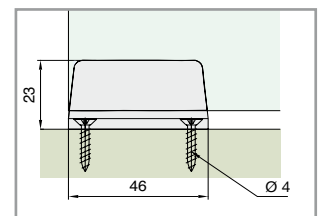


### GLASS DRILLING DIAGRAM

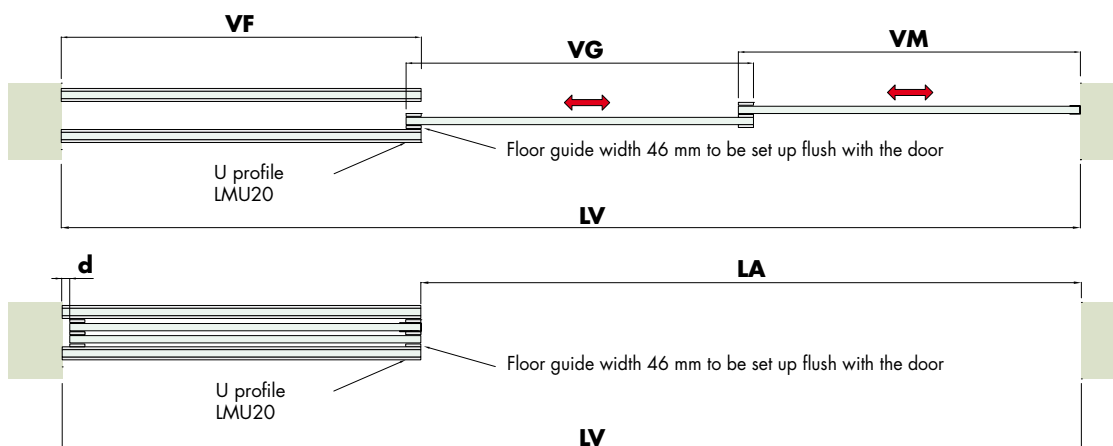
**H** = door-opening height  
**HM** = sliding glass height  
**HF** = fixed glass height



## FLOOR GUIDE



**2 sliding doors + double fixed glass solution for parking (left mounting)**  
Closing with MSC7 type door dragging ring or handle.



$$\mathbf{VM=VG=\frac{LV-d}{3}+29}$$

$$\mathbf{V_F} = \mathbf{V_M} + \mathbf{d}$$

**LA=LV-VF**

**d**=5mm MINIMUM

**VM** = Glass with handle width  
**VG** = Glass on guide width  
**VF** = Fixed glass width  
**LV** = Door-opening width  
**LA** = Opening width

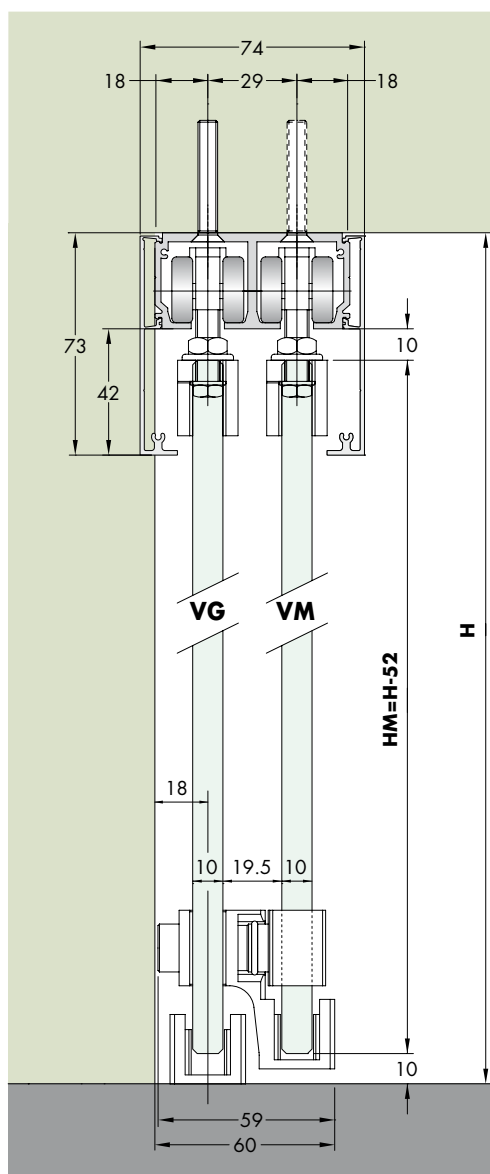
**IMPORTANT:**

- If walls are out of plumb, that can influence the calculation **VF!** Increase “**d**” distance as needed to compensate the out of plumb
- When using a handle bar, a correct distance **D** from the glass edge must be considered by using Art. LMPO (See page 476)

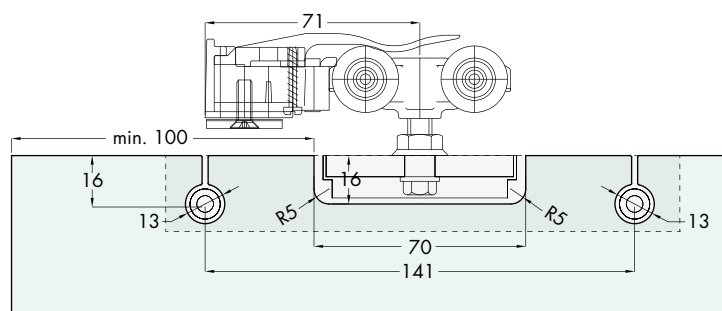
**Example:** for  $LV=3000\text{mm}$   
 $d=5\text{mm}$

$VM=VG = [(3000-5)/3]+29 = 1027\text{mm}$   
 $VF=1027+5=1032\text{mm}$   
 $LA=3000-1032=1968\text{mm}$

## TYPE C: 2 sliding doors with rollaway parking solution (left mounting)

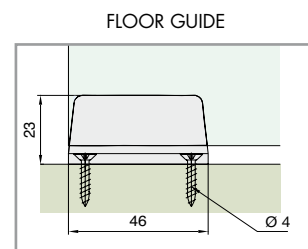
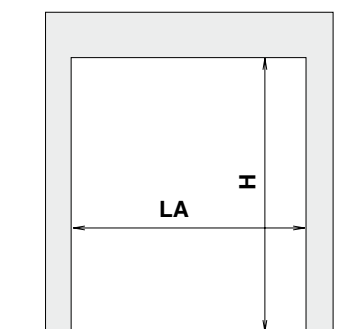


RECOMMENDED GLASS 10 mm TEMPERED

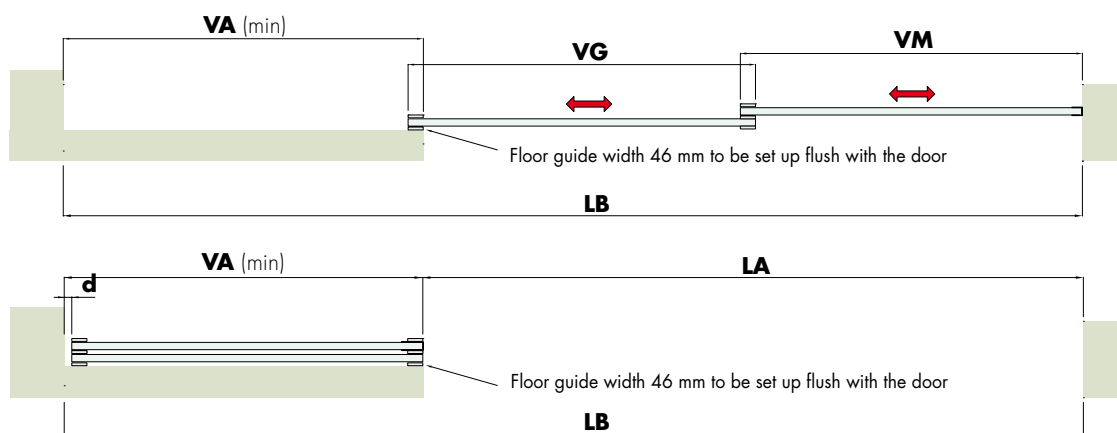


GLASS DRILLING DIAGRAM

**H** = door-opening height  
**HM** = sliding glass height



## 2 sliding doors with rollaway parking solution (left mounting) Closing with MSC7 type door dragging ring or handle.



$$VM = VG = \frac{LA}{2} + 43$$

$$VA(\min) = VM + d$$

$$LB = LA + VA$$

$$d = 5\text{mm MINIMUM}$$

**VM** = Glass with handle width  
**VG** = Glass on guide width  
**VF** = Fixed glass width  
**LB** = Track length  
**LA** = Opening width

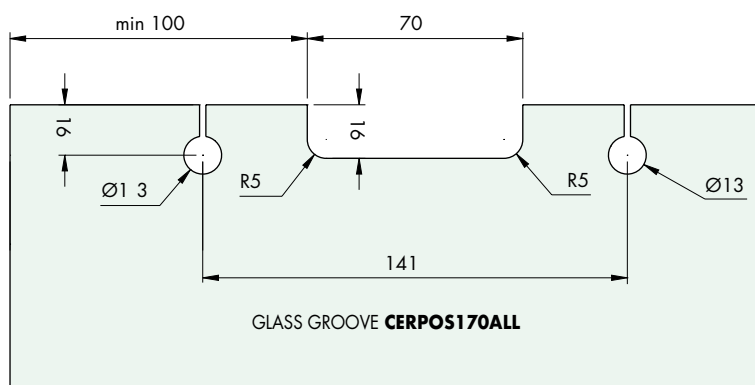
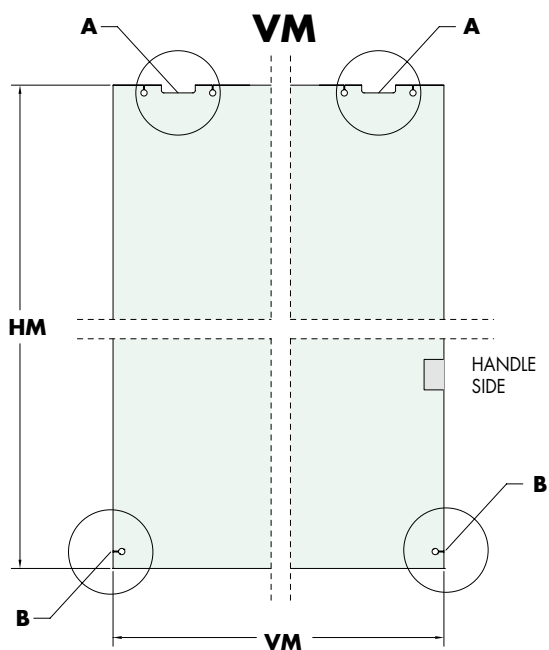
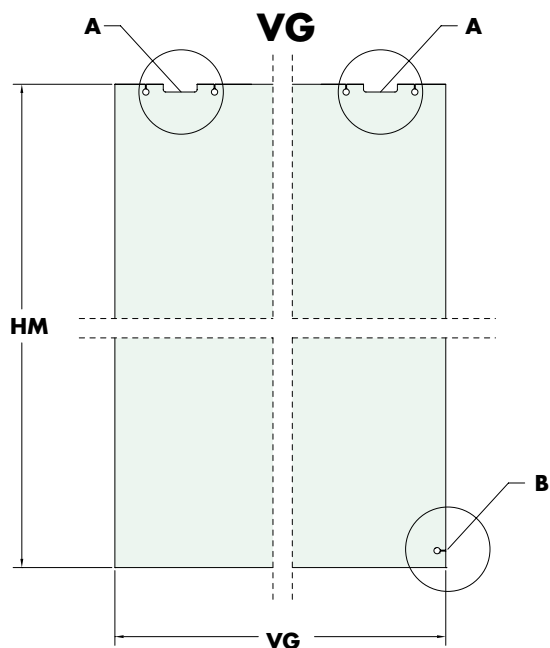
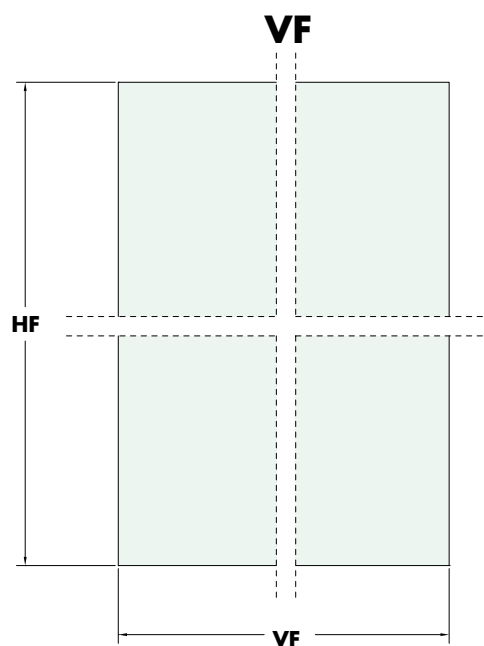
### IMPORTANT:

- If walls are out of plumb, that can influence the calculation **VA**! Increase "**d**" distance as needed to compensate the out of plumb
- When using a handle bar, a correct distance **D** from the glass edge must be considered by using Art. LMPO (See page 476)

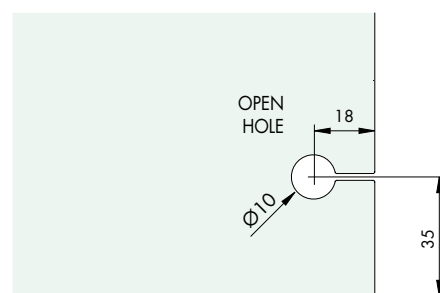
**Example:** for **LA**=1968mm  
**d**=5mm  
**VM**=**VG** = (1968/2)+43 = 1027mm  
**VA**=1027+5=1032mm  
**LB**=1968+1032=3000mm

## GLASS DIAGRAMS - 10 mm Tempered glass thickness

**VF** = Fixed glass - **VG** = Glass on guide - **VM** = Glass with handle

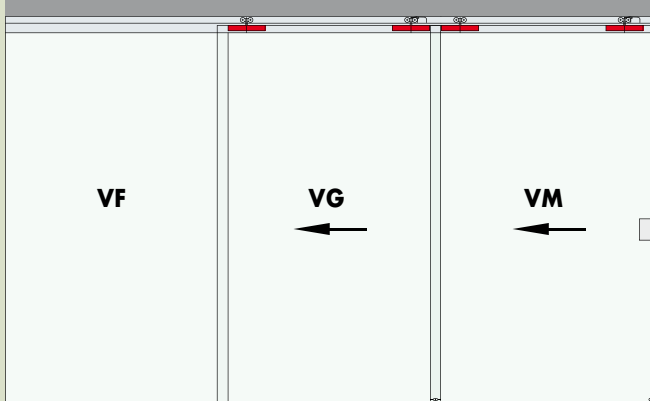


**A**



**B**

## MAXIMUM DOOR OPENING WIDTH 3000 mm KIT 2 DOORS + FIXED - LH ASSEMBLY



VF = Fixed Glass VG = Glass on Guide VM = Glass with Handle

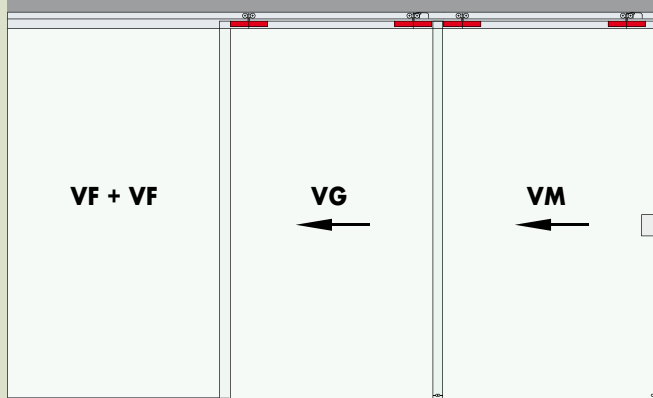


## Art. LMTRA3COVDX or LMTRA3COVSX TYPE A CEILING FIXING

Matt aluminium, polished aluminium, brushed stainless steel effect aluminium.

Art.	Description	Q.ty
<b>LM2950C</b>	Set for one door	2 Set
<b>LM51,300</b>	LM51 aluminium rail L 3000 mm	1 Pc
<b>LM41,300</b>	LM41 fixed profile L 3000 mm	1 Pc
<b>LMTR2DX/SX</b>	Dragging accessory	1 Set
<b>LMU20,150</b>	U profile L 1498 mm	1 Pc
<b>GTUP2</b>	Glass stop gasket	3 m
<b>LMU20TP</b>	End caps for U profile	1 Pc
<b>PBD3184</b>	PBD3184 profile L 3000 mm	1 Pc
<b>LM3130,300</b>	LM3130 high cover L 3000 mm	1 Pc
<b>Optional</b>		
<b>042,3102,071</b>	DÄMPFUNG - 61/100 kg	1-2Pcs
<b>042,3102,072</b>	DÄMPFUNG - 20/60 kg	1-2Pcs
<b>PBD3185</b>	Offsetting side profile	1 Pc
<b>HW,18619</b>	Wall door stop	1 Pc

## MAXIMUM DOOR OPENING WIDTH 3000 mm KIT 2 DOORS + DOUBLE FIXED - LH ASSEMBLY



VF = Fixed Glass VG = Glass on Guide VM = Glass with Handle

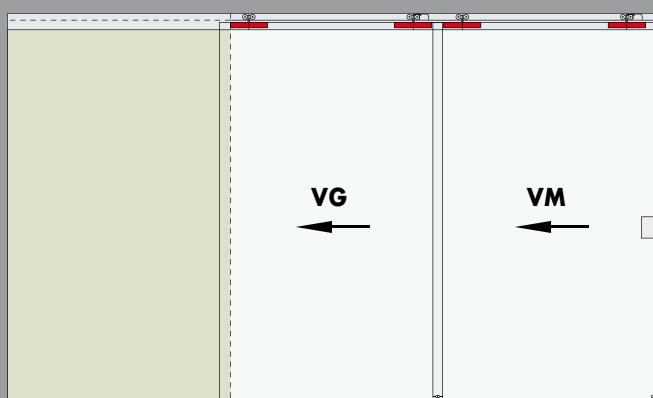


## Art. LMTRB3COVDX or LMTRB3COVSX TYPE B CEILING FIXING

Matt aluminium, polished aluminium, brushed stainless steel effect aluminium.

Art.	Description	Q.ty
<b>LM2950C</b>	Set for one door	2 Set
<b>LM51,300</b>	LM51 aluminium rail L 3000 mm	1 Pc
<b>LM41,300</b>	LM41 fixed profile L 3000 mm	2 Pcs
<b>LMTR2DX/SX</b>	Dragging accessory	1 Set
<b>LMU20,300</b>	U profile L 3000 mm	1 Pc
<b>GTUP2</b>	Glass stop gasket	5 m
<b>LMU20TP</b>	End caps for U profile	2 Pcs
<b>PBD3184</b>	PBD3184 profile L 3000 mm	2 Pcs
<b>Optional</b>		
<b>042,3102,071</b>	DÄMPFUNG - 61/100 kg	1-2Pcs
<b>042,3102,072</b>	DÄMPFUNG - 20/60 kg	1-2Pcs
<b>PBD3185</b>	Offsetting side profile	2 Pcs
<b>HW,18619</b>	Wall door stop	1 Pc

## MAXIMUM DOOR OPENING WIDTH 3000 mm KIT 2 ROLLAWAY DOORS - LH FIXING



VG = Glass on guide VM = Glass with Handle



## Art. LMTRC3COVDX or LMTRC3COVSX TYPE C CEILING FIXING

Matt aluminium, polished aluminium, brushed stainless steel effect aluminium.

Art.	Description	Q.ty
<b>LM2950C</b>	Set for one door	2 Set
<b>LM51,300</b>	LM51 aluminium rail L 3000 mm	1 Pc
<b>LMTR2DX/SX</b>	Dragging accessory	1 Set
<b>LM3130,200</b>	LM3130 high cover L 2000 mm	1 Pc
<b>LM3130,300</b>	LM3130 high cover L 3000 mm	1 Pc
<b>Optional</b>		
<b>042,3102,071</b>	DÄMPFUNG - 61/100 kg	1-2Pcs
<b>042,3102,072</b>	DÄMPFUNG - 20/60 kg	1-2Pcs
<b>HW,18619</b>	Wall door stop	1 Pc





TECHNICAL GUIDE AVAILABLE ON:  
[www.loglimassimo.it](http://www.loglimassimo.it)



## LMTR SYSTEM FOR 3 PANELS DRAGGING

Ceiling **mounted sliding system with 3 panels dragging system** and with option of **fixed glass**. Unique design, whose feature is to provide everything required to support 10mm-thick glass doors with 100kg Max capacity per door in little space. Swiss ECU accessories and accessories of our own production such as the clamps Art. CERPOS170COV and the accessories Art.LMTR3 are assembled.

The system **can include** soft closing mechanisms (Dämpfung)

Spanner to insert LMTR dragging accessories on page 24



### LH ASSEMBLY

- VF = Fixed Glass
- VG = Glass on Guide
- VI = Intermediate Glass
- VM = Glass with Handle

PATENTED  
SYSTEM



### LH ASSEMBLY



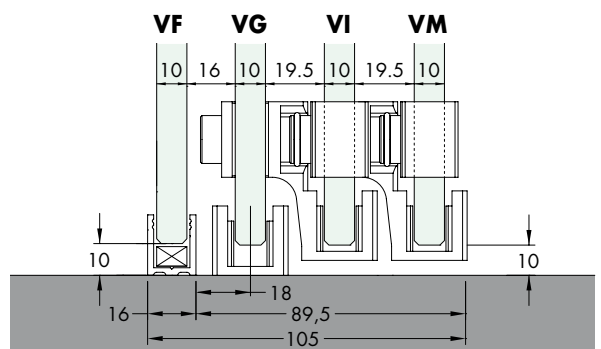
RH kit photo

## DRAGGING ACCESSORY FOR 3 PANELS

Material: aluminium

Features: kit of dragging accessories for 3 panels. It allows the doors to fully overlap, positioning them perfectly aligned flush with the fixed glass. When opening and closing, the sliding doors are hooked together thanks to the innovative system with sealing ring.

Finish: matt aluminium, polished aluminium, brushed stainless steel-effect aluminium



Art.	Description	Glass	Q.ty
LMTR3DX	Right - RH	10 mm	1 Set
LMTR3SX	Left - LH	10 mm	1 Set



## LMTR ACCESSORIES SET FOR PANE OF GLASS MAX 100 KG THICKNESS 10 mm

Material: CNC machined aluminium clamps, PVC gaskets.

Set consisting of: 2 carriages with screw, 2 clamps with cover, 2 locking stops.

Finish: matt aluminium, polished aluminium, brushed stainless steel-effect aluminium

Art.	Description	Q.ty
LM2950C	LMTR set for glass pane 10 mm thick	1 Set



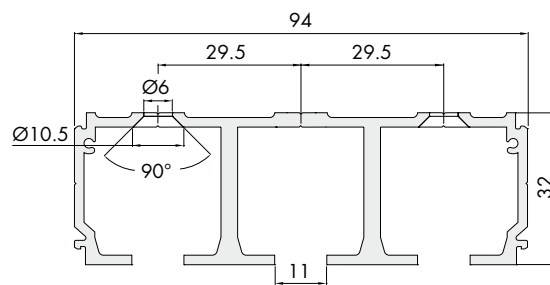
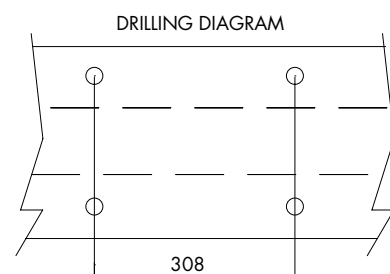
## LM61 PRE-DRILLED ALUMINUM TRIPLE TRACK

Material: aluminium

Features: pre-drilled aluminium track for ceiling fixing

Finish: matt aluminium, polished aluminium, brushed stainless steel-effect aluminium

**Important: polished aluminium only length 2000, 3000, 4000 mm**



Art.	Description	No. of holes	Q.ty
LM61,200	LM61 Triple track length 2000 mm	12/14	1 Pc
LM61,300	LM61 Triple track length 3000 mm	20	1 Pc
LM61,400	LM61 Triple track length 4000 mm	26	1 Pc
LM61,600	LM61 Triple track length 6000 mm	40	1 Pc



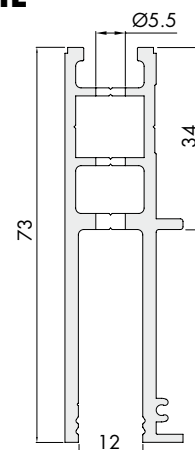
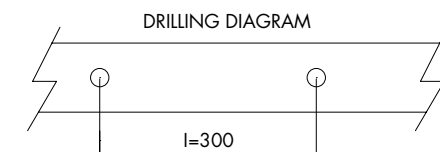
## LM41 PRE-DRILLED ALUMINIUM FIXED PROFIL

Material: aluminium

Features: aluminium profile for wall and ceiling mounting.

Finish: matt aluminium, polished aluminium, brushed stainless steel-effect aluminium

**Important: polished aluminium only in lengths 2000, 3000, 4000 mm**



Art.	Description	No. of holes	Q.ty
LM41,200	Fixed profile LM41 length 2000 mm	6/7	1 Pc
LM41,300	Fixed profile LM41 length 3000 mm	10	1 Pc
LM41,400	Fixed profile LM41 length 4000 mm	13/14	1 Pc
LM41,600	Fixed profile LM41 length 6000 mm	20	1 Pc

## FIXED BOTTOM U PROFILE

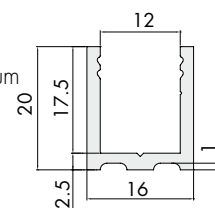
Material: aluminium

Features: profile with 3000/1498 mm long squared edges and guide line to help drilling.

Finish: matt aluminium, brushed stainless steel-effect aluminium, polished aluminium



End caps for U profile  
**LMU20TP**



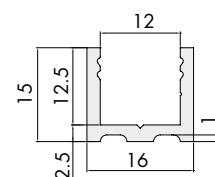
Art.	Description	Q.ty
<b>LMU20,150</b>	"U" profile length 1498 mm	1 Pc
<b>LMU20,300</b>	"U" profile length 3000 mm	1 Pc
<b>LMU20TP</b>	"U" profile caps 20 x 16 x 1 mm	1 Pc

## OFFSETTING SIDE PROFILE FOR FIXED GLASS

Material: aluminium

Features: 3000 mm long aluminium profiles with square edges and guide line to help drilling.

Finish: matt aluminium, brushed stainless steel-effect aluminium, polished aluminium



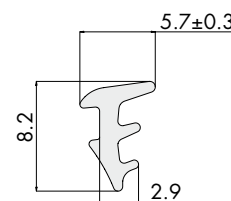
Art.	Description	Q.ty
<b>PBD3185</b>	U-section adjustment profile length 3000 mm	1 Pc

## GASKET PROFILE

Material: PVC

Features: PVC gasket to be inserted in the "U" profile Art. LMU20 and fixed profile Art. LM41.

Finish: transparent, embossed



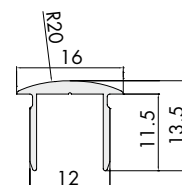
Art.	Description	Finish	Q.ty
<b>GTUP2</b>	Transparent gasket - Thickness 2 mm	Transparent	1 m
<b>GTUP2300</b>	Transparent gasket - Thickness 2 mm - 300 m ROLL	Transparent	1 Set
<b>GTUP2G</b>	Embossed gasket - Thickness 2 mm	Embossed	1 m
<b>GTUP2300G</b>	Embossed gasket - Thickness 2 mm - 300 m ROLL	Embossed	1 Set

## PBD3184 ALUMINIUM FINISHING PROFILE

Material: aluminium

Features: upper radial profile for exposed parts without glass for use in combination with the fixed profile LM41.

Finish: matt aluminium, brushed stainless steel-effect aluminium, polished aluminium



Art.	Description	Dimensions	Q.ty
<b>PBD3184,100</b>	Upper radial profile	992 mm x 13.5 mm x 16 mm	1 Pc
<b>PBD3184,150</b>	Upper radial profile	1498 mm x 13.5 mm x 16 mm	1 Pc
<b>PBD3184</b>	Upper radial profile	3000 mm x 13.5 mm x 16 mm	1 Pc



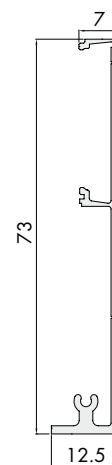
## LM3130 HIGH ALUMINIUM COVER

Material: aluminium

Features: high clamp cover for rails LM21 - LM31 - LM51 - LM61

Finish: matt aluminium, polished aluminium, brushed stainless steel-effect aluminium

**Important: polished aluminium only in lengths 2000, 3000, 4000 mm**



Art.	Description	Q.ty
<b>LM3130,200</b>	LM3130 high cover length 2000 mm	1 Pc
<b>LM3130,300</b>	LM3130 high cover length 3000 mm	1 Pc
<b>LM3130,400</b>	LM3130 high cover length 4000 mm	1 Pc
<b>LM3130,600</b>	LM3130 high cover length 6000 mm	1 Pc



## DÄMPFUNG

Material: ABS + zamak + steel

Features: soft stop complete with accessories for one door.

Assembly instructions inside the package.

Hydraulic clammer tested for 100,000 cycles.

Art.	Description	Q.ty
<b>042,3102,071</b>	DÄMPFUNG - Soft closing mechanism from 61 to 100 kg	1 Pc
<b>042,3102,072</b>	DÄMPFUNG - Soft closing mechanism from 20 to 60 kg	1 Pc

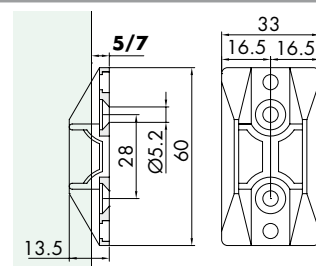


## "U" WALL MOUNTED DOOR STOP WITH CENTRING

Material: ABS

Features: wall panel door stop.

Finish: white



Art.	Description	Finish	Q.ty
<b>HW,18619</b>	Door stop	white	1 Pc

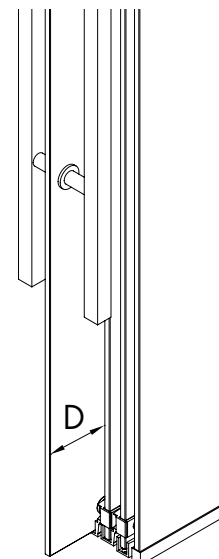
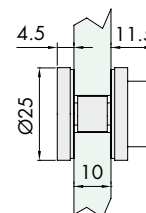
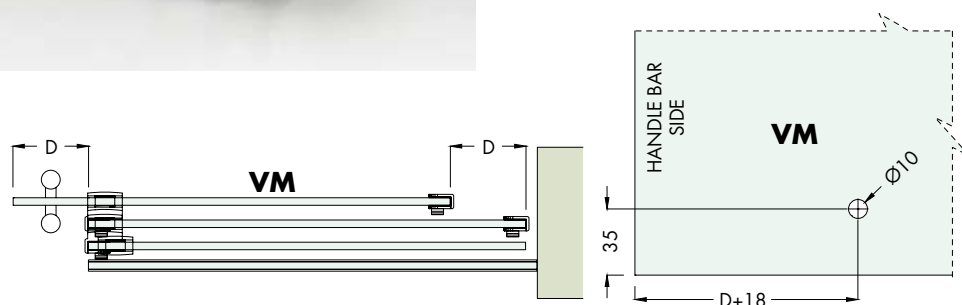


## DRAGGING ACCESSORY WITH HANDLE BAR

Material: aluminium

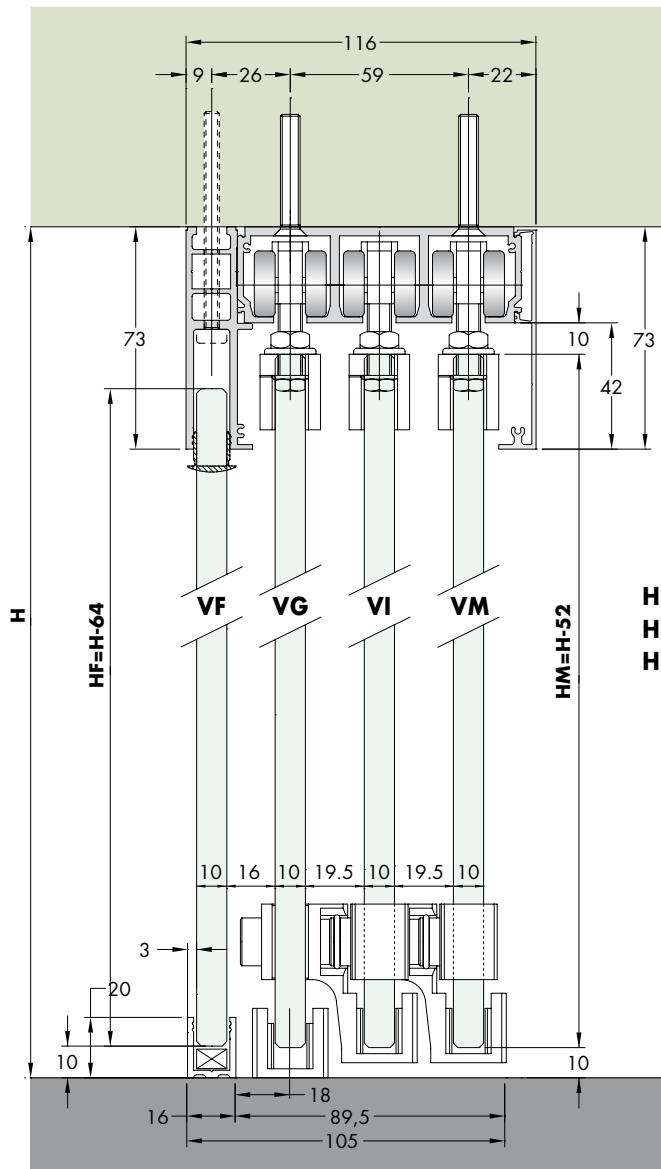
Features: aluminium accessory to be used as spacer when using a handle bar along with the dragging kit.

Finish: matt aluminium, polished aluminium, brushed stainless steel-effect aluminium

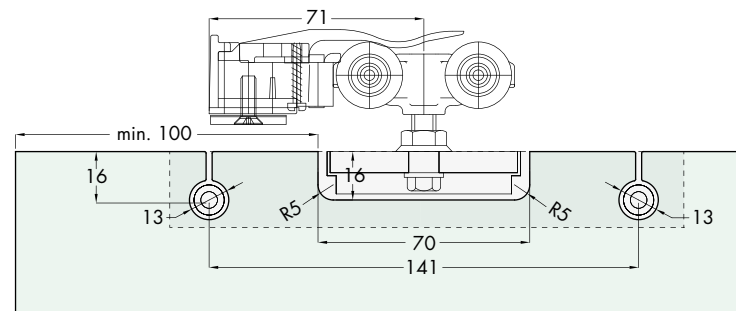


Art.	Description	Glass Hole	Q.ty
<b>LMPO</b>	Handle bar spacer	Ø 10 mm	1 Pc

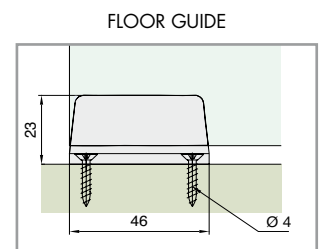
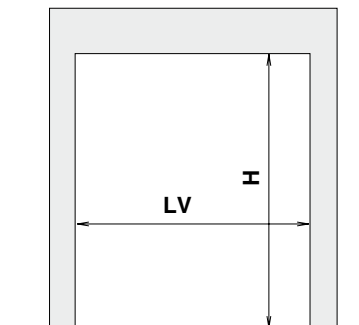
## TYPE D: 3 sliding doors + fixed glass solution (left mounting)



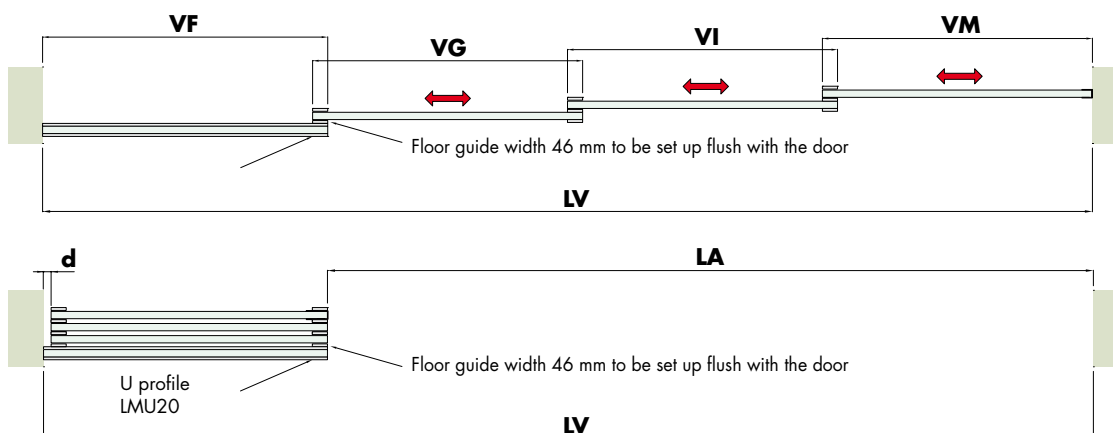
RECOMMENDED GLASS 10 mm TEMPERED



GLASS DRILLING DIAGRAM



### 3 sliding doors + fixed glass solution (left mounting) Closing with MSC7 type door dragging ring or handle.



$$VM = VI = VG = \frac{LV \cdot d}{4} + 33$$

$$VF = VM + d$$

$$LA = LV - VF$$

$$d = 5 \text{ mm MINIMUM}$$

- VM** = Glass with handle width
- VI** = Intermediate glass width
- VG** = Glass on guide width
- VF** = Fixed glass width
- LV** = Door-opening width
- LA** = Opening width

### IMPORTANT:

- If walls are out of plumb, that can influences the calculation **VF**! Increase "d" distance as needed to compensate the out of plumb
- When using a handle bar, a correct distance **D** from the glass edge must be considered by using Art. LMPO (See page 488)

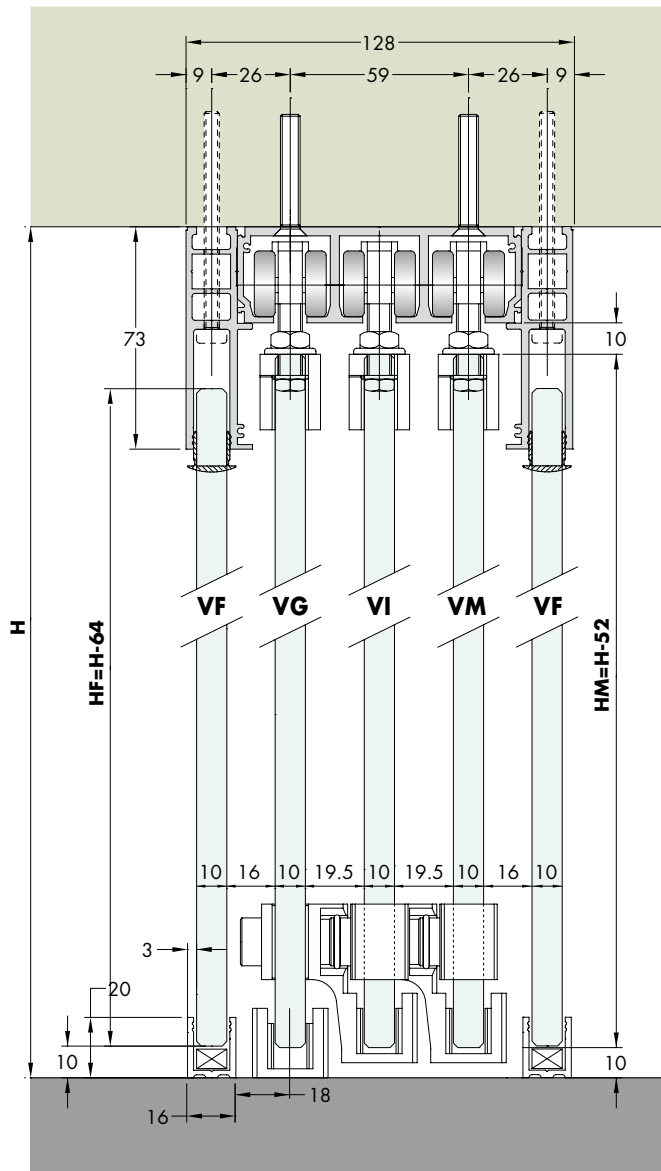
**Example:** for **LV**=4000mm  
**d**=5mm

$$VM = VI = VG = [(4000-5)/4] + 33 = 1032 \text{ mm}$$

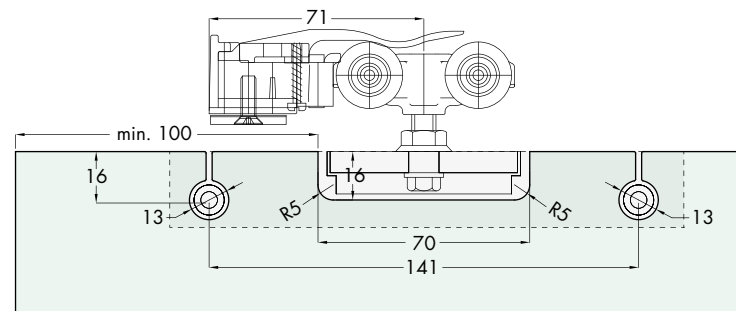
$$VF = 1032 + 5 = 1037 \text{ mm}$$

$$LA = 4000 - 1037 = 2963 \text{ mm}$$

## TYPE E: 3 sliding doors + double fixed glass solution for parking (left mounting)



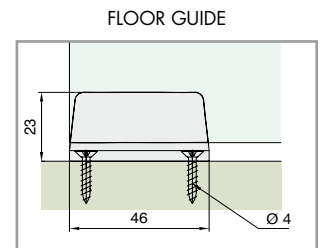
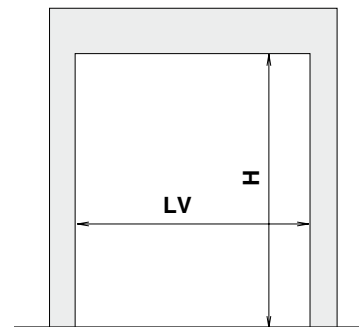
RECOMMENDED GLASS 10 mm TEMPERED



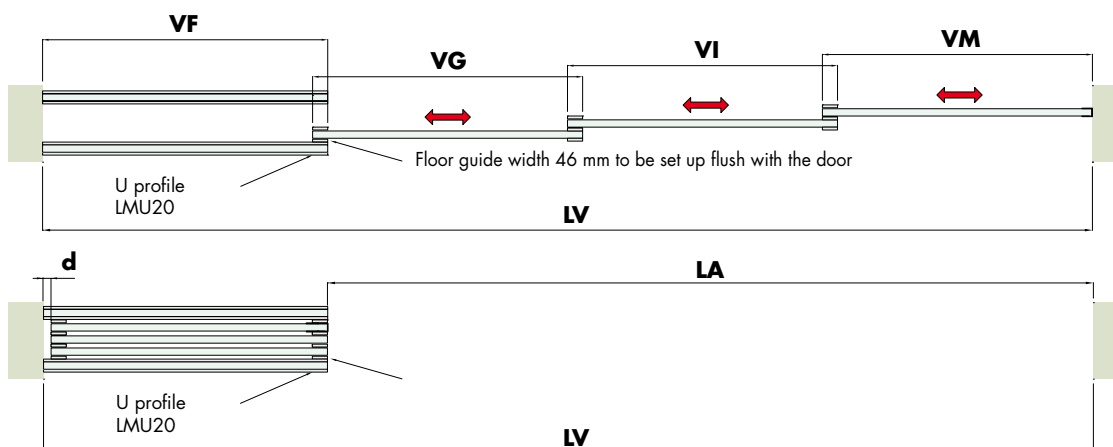
GLASS DRILLING DIAGRAM



**H** = door-opening height  
**HM** = sliding glass height  
**HF** = fixed glass height



### 3 sliding doors + double fixed glass solution for parking (left mounting) Closing with MSC7 type door dragging ring or handle.



$$VM = VI = VG = \frac{LV \cdot d}{4} + 33$$

$$VF = VM + d$$

$$LA = LV - VF$$

$$d = 5\text{mm MINIMUM}$$

**VM** = Glass with handle width  
**VI** = Intermediate glass width  
**VG** = Glass on guide width  
**VF** = Fixed glass width  
**LV** = Door-opening width  
**LA** = Opening width

### IMPORTANT:

- If walls are out of plumb, that can influence the calculation **VF**! Increase "**d**" distance as needed to compensate the out of plumb
- When using a handle bar, a correct distance **D** from the glass edge must be considered by using Art. LMPO (See page 488)

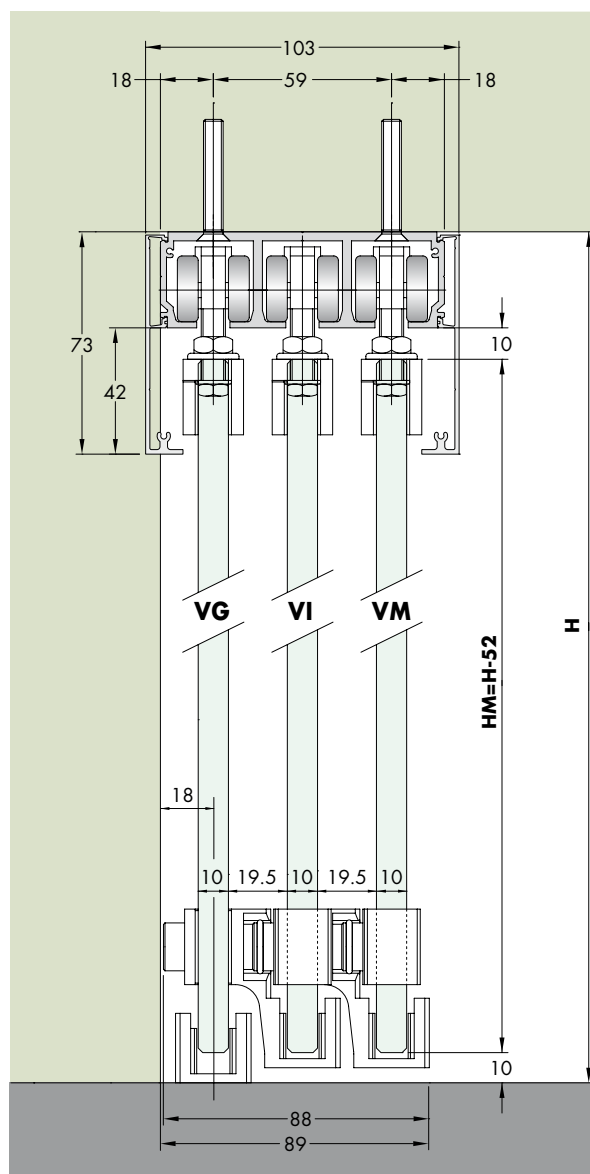
**Example:** for **LV**=4000mm  
**d**=5mm

$$VM = VI = VG = [(4000-5)/4] + 33 = 1032\text{mm}$$

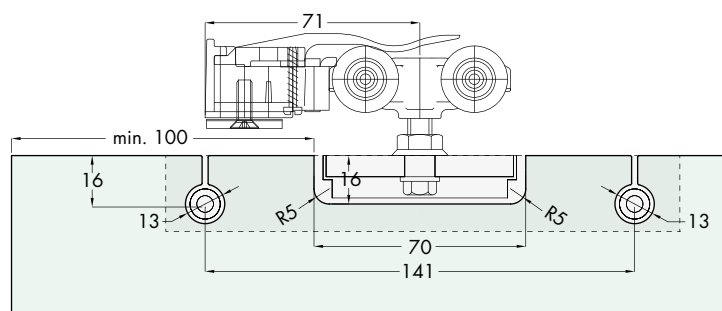
$$VF = 1032 + 5 = 1037\text{mm}$$

$$LA = 4000 - 1037 = 2963\text{mm}$$

## TYPE F: 3 sliding doors with rollaway parking solution (left mounting)

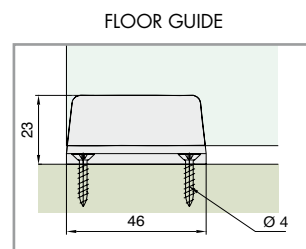
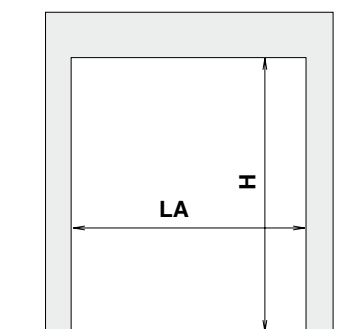


RECOMMENDED GLASS 10 mm TEMPERED

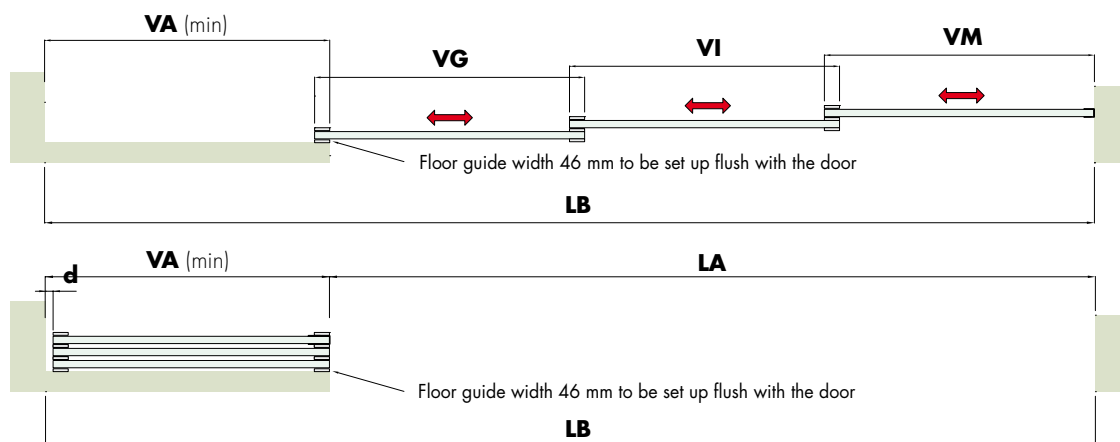


GLASS DRILLING DIAGRAM

**H** = door-opening height  
**HM** = sliding glass height



### 3 sliding doors with rollaway parking solution (left mounting) Closing with MSC7 type door dragging ring or handle.



$$VM = VI = VG = \frac{LA}{3} + 44$$

$$VA(\min) = VM + d$$

$$LB = LA + VA$$

$$d = 5\text{mm MINIMUM}$$

**VM** = Glass with handle width  
**VI** = Intermediate glass width  
**VG** = Glass on guide width  
**VF** = Fixed glass width  
**LB** = Track length  
**LA** = Opening width

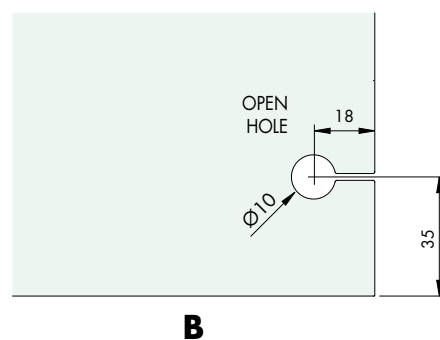
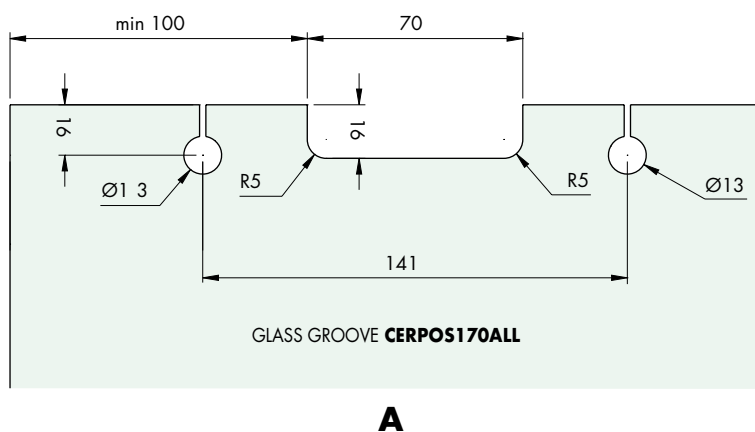
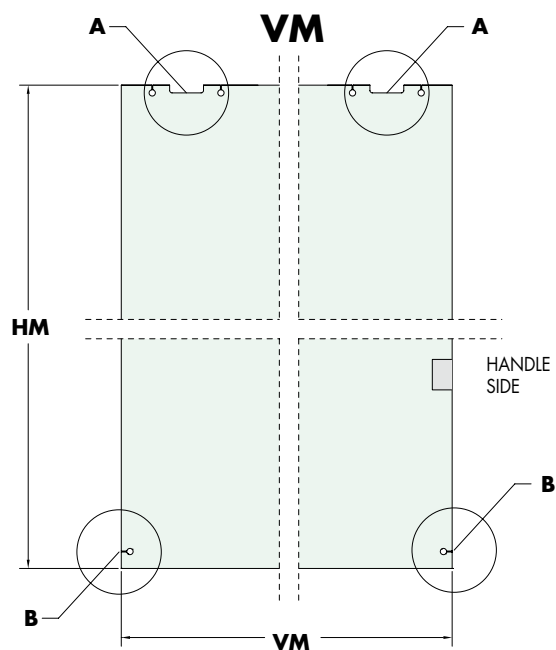
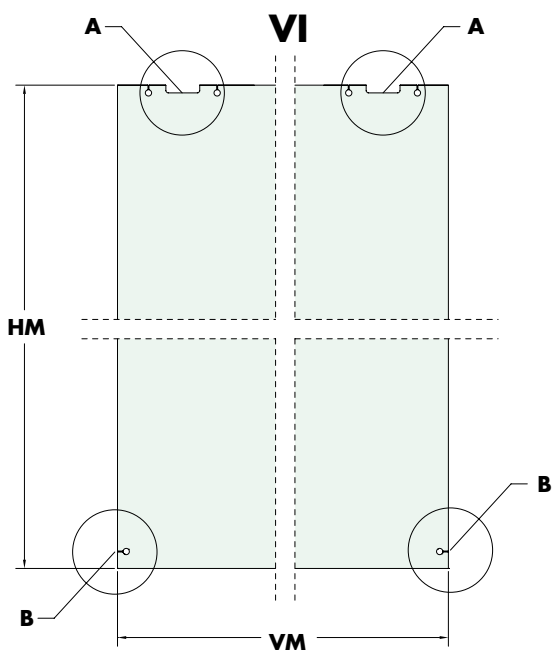
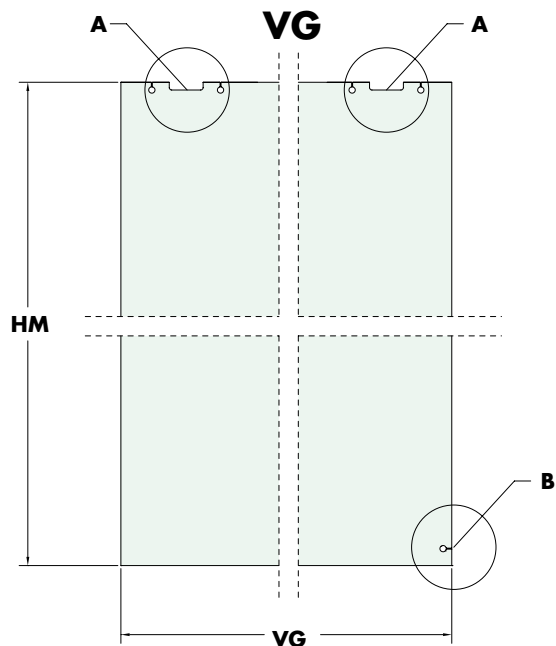
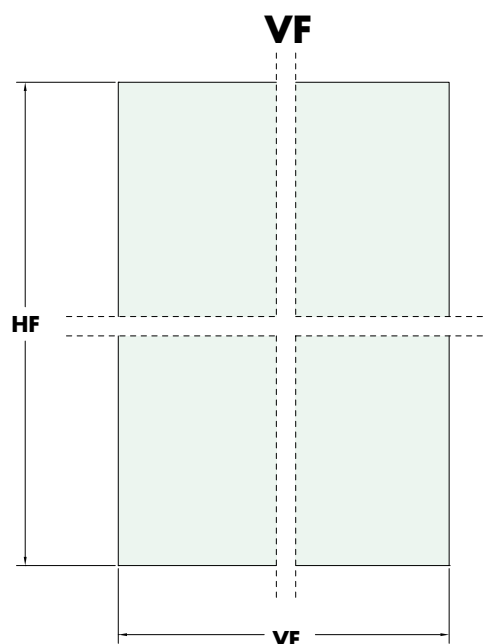
#### IMPORTANT:

- If walls are out of plumb, that can influence the calculation **VF**! Increase "d" distance as needed to compensate the out of plumb
- When using a handle bar, a correct distance **D** from the glass edge must be considered by using Art. LMPO (See page 488)

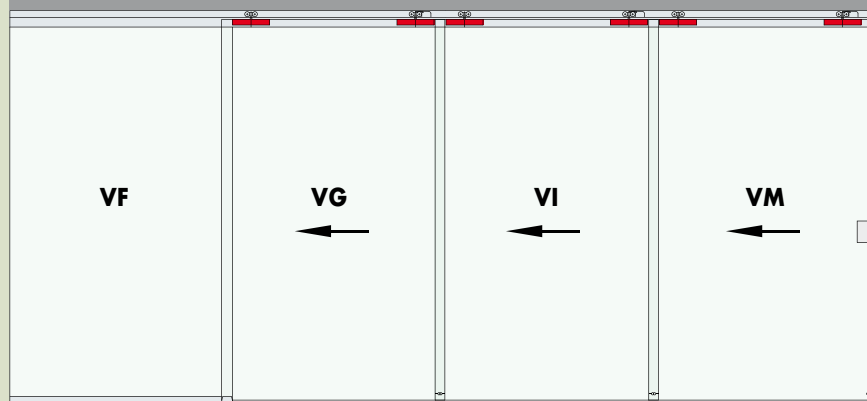
**Example:** for **LA**=2963mm  
**d**=5mm  
**VM**=**VG** = (2963/3)+44 = 1032mm  
**VA**=1032+5=1037mm  
**LB**=2963+1037=4000mm

## GLASS DIAGRAMS - 10 mm Tempered glass thickness

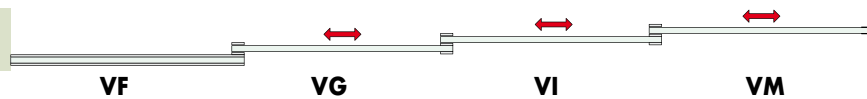
**VF** = Fixed Glass - **VG** = Glass on Guide - **VI** = Intermediate Glass - **VM** = Glass with Handle



## MAXIMUM DOOR OPENING WIDTH 4000 mm KIT 3 DOORS + FIXED - LH ASSEMBLY



VF = Fixed Glass VG = Glass on Guide VI = Intermediate Glass VM = Glass with Handle

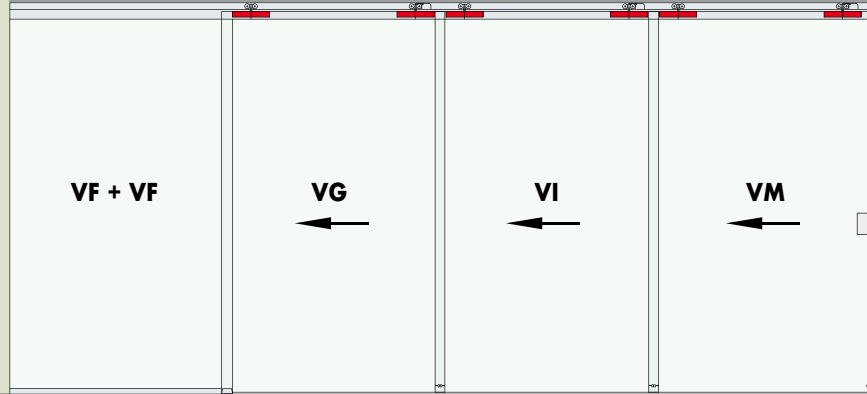


## Art. LMTRD4COVDX or LMTRD4COVSX TYPE D CEILING FIXING

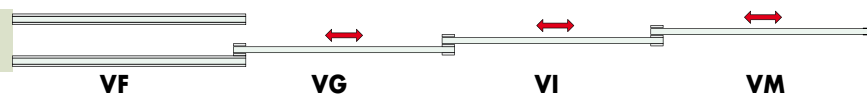
Matt aluminium, polished aluminium, brushed stainless steel effect aluminium.

Art.	Description	Q.ty
<b>LM2950C</b>	Set for one door	3 Sets
<b>LM61,400</b>	Aluminium track LM61 L 4000 mm	1 Pc
<b>LM41,400</b>	LM41 fixed profile L 4000 mm	1 Pc
<b>LMTR3DX/SX</b>	Dragging accessory	1 Set
<b>LMU20,150</b>	U profile L 1498 mm	1 Pc
<b>GTUP2</b>	Glass stop gasket	3 m
<b>LMU20TP</b>	End caps for U profile	1 Pc
<b>PBD3184</b>	PBD3184 profile L 3000 mm	1 Pc
<b>LM3130,400</b>	LM3130 high cover L 4000 mm	1 Pc
<b>Optional</b>		
<b>042,3102,071</b>	DÄMPFUNG - 61/100 kg	1-2Pcs
<b>042,3102,072</b>	DÄMPFUNG - 20/60 kg	1-2Pcs
<b>PBD3185</b>	Offsetting side profile	1 Pc
<b>HW,18619</b>	Wall door stop	1 Pc

## MAXIMUM DOOR OPENING WIDTH 4000 mm KIT 3 DOORS + DOUBLE FIXED - LH ASSEMBLY



VF = Fixed Glass VG = Glass on Guide VI = Intermediate Glass VM = Glass with Handle

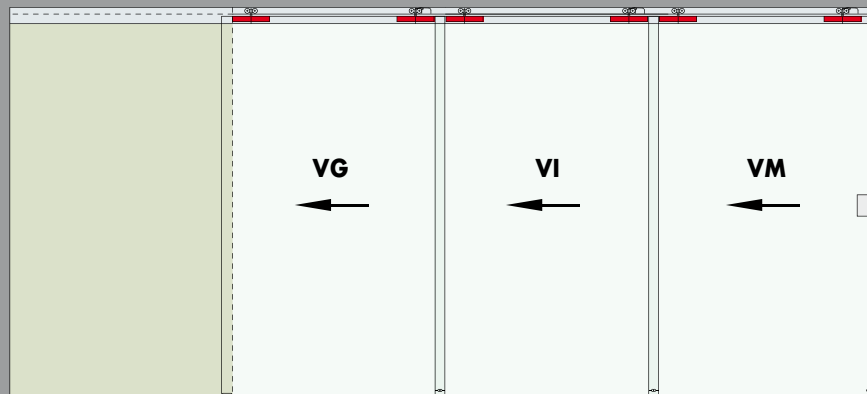


## Art. LMTRE4COVDX or LMTRE4COVSX TYPE E CEILING FIXING

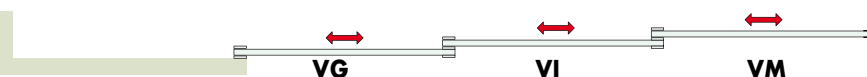
Matt aluminium, polished aluminium, brushed stainless steel effect aluminium.

Art.	Description	Q.ty
<b>LM2950C</b>	Set for one door	3 Sets
<b>LM61,400</b>	Aluminium track LM61 L 4000 mm	1 Pc
<b>LM41,400</b>	LM41 fixed profile L 4000 mm	2 Pcs
<b>LMTR3DX/SX</b>	Dragging accessory	1 Set
<b>LMU20,300</b>	U profile L 3000 mm	1 Pc
<b>GTUP2</b>	Glass stop gasket	5 m
<b>LMU20TP</b>	End caps for U profile	2 Pcs
<b>PBD3184</b>	PBD3184 profile L 3000 mm	2 Pcs
<b>Optional</b>		
<b>042,3102,071</b>	DÄMPFUNG - 61/100 kg	1-2Pcs
<b>042,3102,072</b>	DÄMPFUNG - 20/60 kg	1-2Pcs
<b>PBD3185</b>	Offsetting side profile	2 Pcs
<b>HW,18619</b>	Wall door stop	1 Pc

## MAXIMUM DOOR OPENING WIDTH 4000 mm KIT 3 ROLLAWAY DOORS - LH FIXING



VG = Glass on guide VI = Intermediate glass VM = Glass with handle



## Art. LMTRF4COVDX or LMTRF4COVSX TYPE F CEILING FIXING

Matt aluminium, polished aluminium, brushed stainless steel effect aluminium.

Art.	Description	Q.ty
<b>LM2950C</b>	Set for one door	3 Sets
<b>LM61,400</b>	Aluminium track LM61 L 4000 mm	1 Pc
<b>LMTR3DX/SX</b>	Dragging accessory	1 Set
<b>LM3130,300</b>	LM3130 high cover L 3000 mm	1 Pc
<b>LM3130,400</b>	LM3130 high cover L 4000 mm	1 Pc
<b>Optional</b>		
<b>042,3102,071</b>	DÄMPFUNG - 61/100 kg	1-2Pcs
<b>042,3102,072</b>	DÄMPFUNG - 20/60 kg	1-2Pcs
<b>HW,18619</b>	Wall door stop	1 Pc



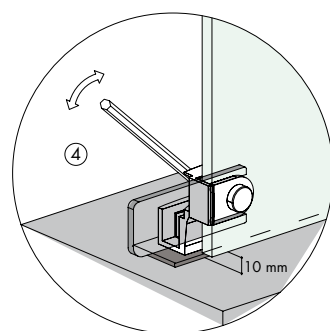
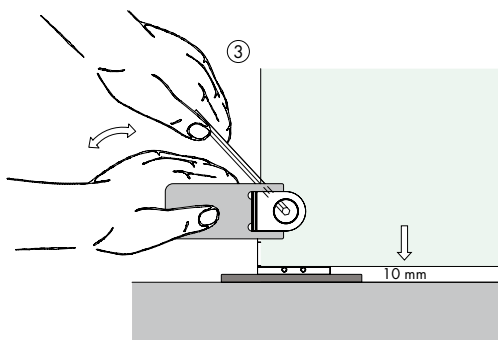
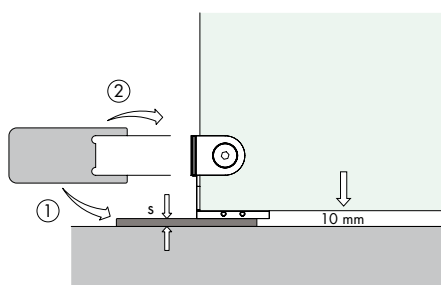
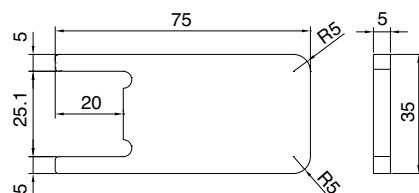
## SPECIAL SPANNER FOR THE ADJUSTMENT AND LINING UP OF LM TELESCOPIC SLIDING DOORS SYSTEM ACCESSORIES

Material: AISI 304 stainless steel

Features: special spanner for the horizontal adjustment and lining up of the LM telescopic panels' accessories (LMTR2/ LMTR3)

Finish: brushed stainless steel

- 1) Set the right shim under the hanging guide
- 2) Introduce the spanner LMCH in front of the accessory, on the closing ring's side, till the stop
- 3) Put the hex screwdriver on the top of the grip
- 4) Screw using the hex screwdriver opposite side to make rotation resistance



**Art.**  
**LMCH**

**Dimensions**  
75 x 35 x 5 mm

**Q.ty**  
1 Pc

## SOFT CLOSING MECHANISM

Suitable for situations where a light and comfortable sliding is required. The door slides silently and is pulled into the end of stroke position. The components of the soft closing mechanism are not visible and thanks to a slot for assembly they are easily accessible even after installation.



**1. Simple preparation** - Fixing to the carriage via just one screw.

**2. Incomparable mounting advantage** - Mounting and dismounting without removing the sliding track.

**3. Perceivable comfort** - The doors are braked gently and pulled into the end of stroke position.




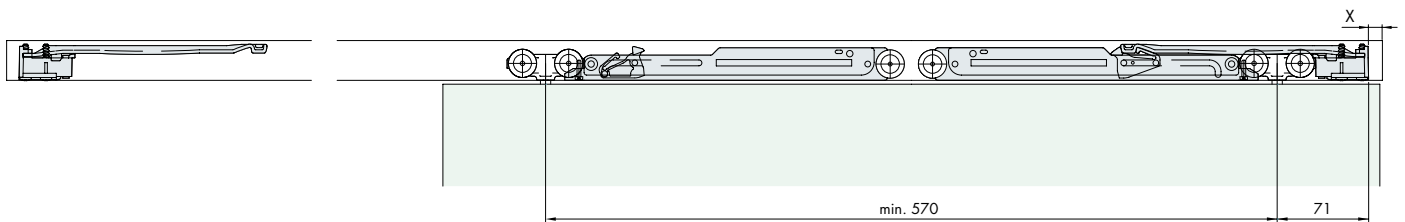
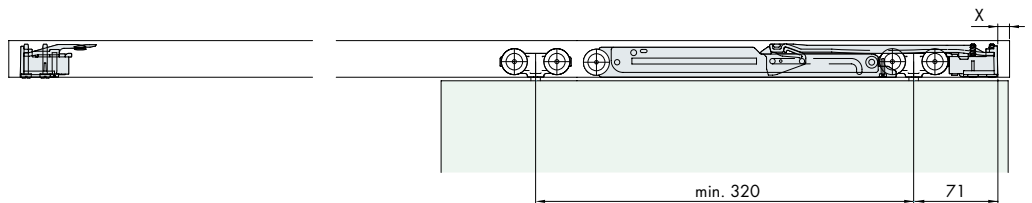
## DÄMPFUNG

Material: ABS + zamak + steel

Features: soft stop complete with accessories for one door. Assembly instructions inside the package.

Hydraulic clamber tested for 100,000 cycles.

Swiss made 



Art.	Description	Q.ty
042,3102,071	DÄMPFUNG - Soft closing mechanism from 61 to 100 kg	1 Pc
042,3102,072	DÄMPFUNG - Soft closing mechanism from 20 to 60 kg	1 Pc

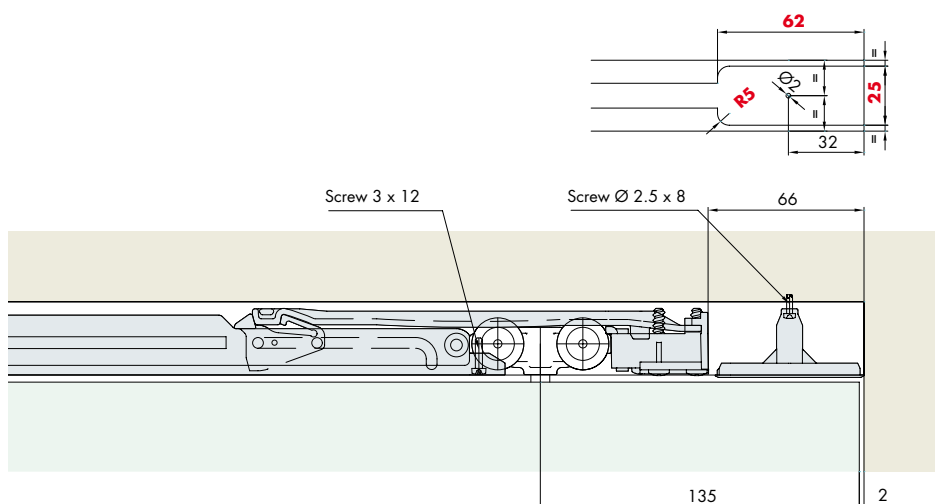


## SLOT COVER

Material: plastic material

Features: accessory to cover the slot required to insert the soft close in case of ceiling mounting.

Colour: white



Art.	Description	Colour	Q.ty
042,3114,071	Slot cover	White	1 Set

The images and information contained in this catalogue are to be considered indicative  
and may be subject to variations without prior notice



LOGLI MASSIMO SpA  
Via Chemnitz, 49/51  
59100 Prato - Italia  
Tel. +39.0574.701035  
Fax +39.0574.527574  
[www.loglimassimo.it](http://www.loglimassimo.it)  
[export@loglimassimo.it](mailto:export@loglimassimo.it)  
[info.lm@saint-gobain.com](mailto:info.lm@saint-gobain.com)



#### SPONSOR



#### ASSOCIATED PARTNERS

