



# SHOWER DOOR HARDWARE

---

Create your perfect bathroom with our extensive range of Shower Hardware and accessories.



---

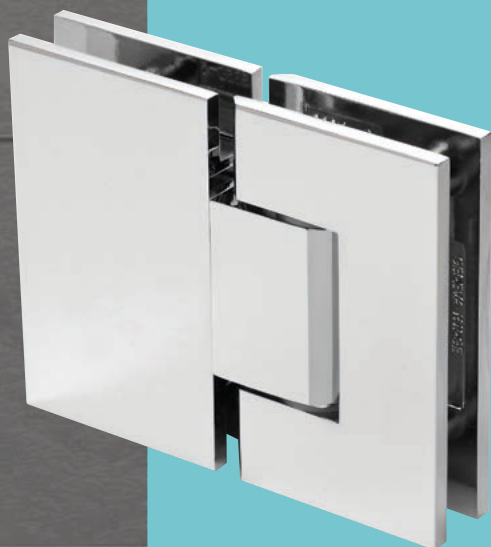
CRL is the world's largest supplier of Frameless Shower Hardware and Accessories.

Inside this brochure you will find a selection of our bestselling shower door products, making them ideal for a wet environment.

From minimalistic hardware such as Hinges, Clamps, Handles, Door Knobs and U-Channels to complete Sliding Shower Door Kits, CRL offers the full package of quality hardware and accessories that will fit your space.

For more information call FREE on  
**00 800 0421 6144**

**CRL**<sup>®</sup>  
crlaurence.co.uk



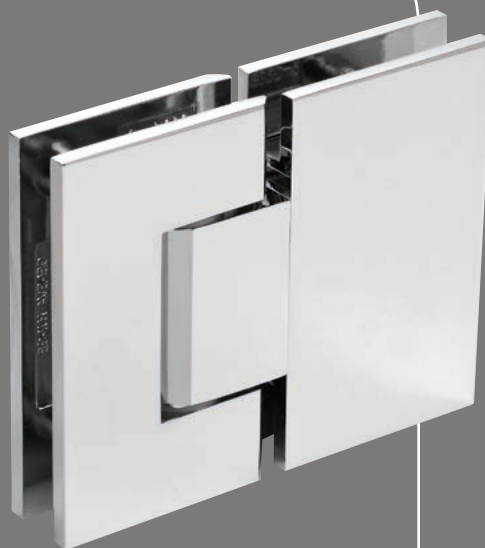
# Contents

---

<b>01. Hinges and Clamps</b>	4
Geneva Series	6
Pinnacle Series	12
Grande Series	16
Riviera Series	18
Altea Series	20
Oil Dynamic Series	22
Bilobina Series	23
Prima Series	24
<b>02. Sliding Shower Doors</b>	28
Serenity	30
Hydroslide	32
<b>03. Support Bars Brackets</b>	34
Square Support Bars Series	36
Round Support Bars Series	38
<b>04. U-Channels &amp; Accessories for Showers</b>	40
Handles	42
Knobs	43
Towel Bars	44
Door Locks	46
U-Channels	47
Shower Seals	48

---

1



# Hinges & Clamps

---

From the bestselling Geneva Series to luxurious Oil Dynamic Hinges, CRL offers a large range of beautiful hinges to suit your taste and needs.

Our comprehensive Glass Clamps assist in maintaining the frameless appearance of contemporary shower enclosures and provide a clean looking alternative to U-Channels. They also match all our square cornered and bevelled edge hinges for a sleeker appearance.





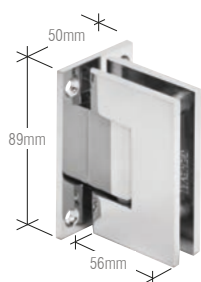




# Geneva Series

Other finishes available as shown in flip out chart at the rear of this brochure

## Geneva Series


**Cat. No. GEN037XX**

Wall Mount Full Back Plate (Factory set for standard closing position)

**Cat. No. GEN537XX**

5° Pre-Set Model  
(Factory set for 5° tighter closure into shower interior)

**Cat. No. GEN337XX**

Adjustable Wall Mount Full Back Plate


**Cat. No. GEN180XX**

180° Glass-to-Glass  
(Factory set for standard closing position)

**Cat. No. GEN580XX**

5° Pre-Set Model (Factory set for 5° tighter closure into shower interior)

**Cat. No. GEN380XX**

Adjustable 180° Glass-to-Glass


**Cat. No. GEN074XX**

Wall Mount Short Back Plate

**Cat. No. GEN574XX**

5° Pre-Set Model  
(Factory set for 5° tighter closure into shower interior)


**Cat. No. GEN045XX**

135° Glass-to-Glass  
(Factory set for standard closing position)

**Cat. No. GEN545XX**

5° Pre-Set Model (Factory set for 5° tighter closure into shower interior)

**Cat. No. GEN345XX**

Adjustable 135° Glass-to-Glass


**Cat. No. GEN044XX**

Wall Mount Offset Back Plate  
(Factory set for standard closing position)

**Cat. No. GEN544XX**

5° Pre-Set Model  
(Factory set for standard closing position)

**Cat. No. GEN344XX**

Adjustable Wall Mount  
Offset Back Plate


**Cat. No. GEN092XX**

90° Glass-to-Glass

**Pivot Pin**

See [crlaurence.co.uk](http://crlaurence.co.uk) for more Pivot Pin information



**Cat. No. G1EP1N**  
Custom Pivot Pin


**Cat. No. GENGK1**
**Cat. No. GEN4GKCLR**

Gasket Replacement Kit For Geneva

### Specifications

**Glass Thickness:** 8mm to 12mm  
Toughened Safety Glass

**Special Feature:** Most models offer a choice of Standard Model, factory set at standard closing position (0°), or 5° Pre-Set Model for tighter closure into shower interior. All models contain a Reversible 5° Pivot Pin. When activated, it allows 5° tighter door closure.

**Construction:** Solid Brass

**Hinge Swings:** 90° in and 90° out  
(at factory set position)

**Closing Type:** Self-centring when within 15° of closed position

**Cut-Out Required** (except GEN092 which requires cut-out for door and two holes for fixed panel)

**Includes:** Gaskets, screws, and glass fabrication dimensions

**Standard:** DIN EN14428

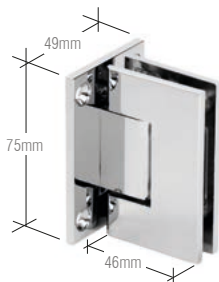


Maximum Capacities	8mm and 10mm glass		12mm glass	
	Weight	Door Width	Weight	Door Width
Using Two Hinges	36kg	711mm	36kg	711mm
Using Three Hinges	54kg	813mm	54kg	813mm

\*NOTE: Do not exceed maximum door weight or width when choosing proper quantity of hinges.



## Junior Geneva Series



**Cat. No. JRG037XX**  
Wall Mount Full Back Plate

**Cat. No. JRG537XX**  
5° Pre-Set Model (factory set for 5° tighter closure into shower interior)



**Cat. No. JRG180XX**  
180° Glass-to-Glass (factory set for standard closing position)

**Cat. No. JRG580XX**  
5° Pre-Set Model (Factory set for 5° tighter closure into shower interior)



**Cat. No. JRG074XX**  
Wall Mount Short Back Plate

**Cat. No. JRG574XX**  
5° Pre-Set Model (factory set for 5° tighter closure into shower interior)



**Cat. No. JRG045XX**  
135° Glass-to-Glass (factory set for 5° tighter closure into shower interior)

**Cat. No. JRG545XX**  
5° Pre-Set Model (factory set for 5° tighter closure into shower interior)



**Cat. No. JRG044XX**  
Wall Mount Offset Back Plate (allows clean sight line from shower exterior)

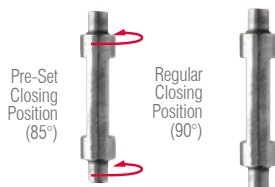
**Cat. No. JRG344CH**  
Adjustable Wall Mount Offset Back Plate  
Chrome finish only



**Cat. No. JRG092XX**  
90° Glass-to-Glass

### Pivot Pin

See [crlaurence.co.uk](http://crlaurence.co.uk) for more Pivot Pin information



**Cat. No. JRGENP1NXX**  
Custom Pivot Pin



**Cat. No. JRG4GK1**  
**Cat. No. JRG4GKCLR**  
Gasket Replacement Kit for Junior Geneva

### Specifications

**Glass Thickness:** 6mm to 8mm  
Toughened Safety Glass

**Special Features:** Most models offer a choice of Standard Model, factory set at standard closing position (0°), or 5° Pre-Set Model for tighter closure into shower interior. All models contain a Reversible 5° Pivot Pin. When activated, it allows 5° tighter door closure.

**Construction:** Solid Brass

**Hinge Swings:** 90° in and 90° out

**Closing Type:** Self-Centring when within 15° of closed position

**Cut-Out Required**

**Includes:** Gaskets, screws, and glass fabrication dimensions

**Standard:** DIN EN14428

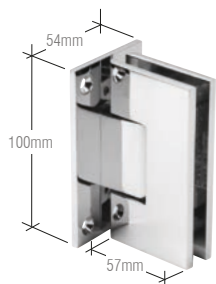


Maximum Capacities	6mm glass		8mm glass	
	Weight	Door Width	Weight	Door Width
Using Two Hinges	28kg	711mm	28kg	711mm
Using Three Hinges	42kg	813mm	42kg	813mm

\*NOTE: Do not exceed maximum door weight or width when choosing proper quantity of hinges.



## Vienna Series



- Cat. No. V1E037XX**  
Wall Mount Full Back Plate  
Standard Model (Factory set for standard  
closing position)
- Cat. No. V1E537XX**  
5° Pre-Set Model  
(Factory set for 5° tighter closure into shower interior)
- Cat. No. V1E337XX**  
Adjustable Wall Mount Full Back Plate



- Cat. No. V1E180XX**  
180° Glass-to-Glass Standard Model  
(Factory set for standard closing position)
- Cat. No. V1E580XX**  
180° Glass-to-Glass Standard Model  
(Factory set for standard closing position)
- Cat. No. V1E380XX**  
Adjustable 180° Glass-to-Glass



- Cat. No. V1E044XX**  
Wall Mount Offset Back Plate Standard Model  
(factory set for standard closing position)
- Cat. No. V1E544XX**  
5° Pre-Set Model (Factory set for 5° tighter closure into  
shower interior)



- Cat. No. V1E092XX**  
90° Glass-to-Glass



- Cat. No. V1E074XX**  
Wall Mount Short Back Plate



- Cat. No. V1E067XX**  
Wall mount positive close



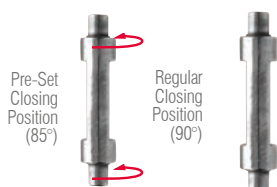
- Cat. No. V1E045XX**  
135° Glass-to-Glass



- Cat. No. V1E780XX**  
180° Glass-to-Glass Positive Close

### Pivot Pin

See [crlaurence.co.uk](http://crlaurence.co.uk)  
for more Pivot Pin  
information



- Cat. No. V1EP1NN**  
Custom Pivot Pin



- Cat. No. V1EGK1**  
**Cat. No. V1EGKCLR**  
Gasket replacement Kit For Vienna



### Specifications

**Glass Thickness:** 10mm to 12mm Toughened Safety Glass

**Special Feature:** Most models offer a choice of Standard Model, factory set at standard closing position (0°), or 5° Pre-Set Model for tighter closure into shower interior. All models contain a Reversible 5° Pivot Pin. When activated, it allows 5° tighter door closure.

**Construction:** Solid Brass

**Hinge Swings:** 90° in and 90° out

**Closing Type:** Self-centring when within 15° of closed position

**Cut-out required** (except V1E092 which requires cut-out for door and two holes for fixed panel)

**Includes:** Gaskets, screws, and glass fabrication dimensions

**Standard:** DIN EN14428

All Vienna hinges, except V1E074, V1E044 and V1E544

Maximum Capacities	10mm glass		12mm glass	
	Weight	Door Width	Weight	Door Width
Using Two Hinges	50kg	914mm	50kg	914mm
Using Three Hinges	63kg	914mm	63kg	914mm

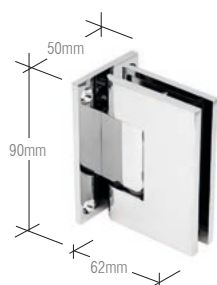
\*NOTE: Do not exceed maximum door weight or width when choosing proper quantity of hinges.

For V1E074, V1E044 and V1E544

Maximum Capacities	10mm glass		12mm glass	
	Weight	Door Width	Weight	Door Width
Using Two Hinges	45kg	864mm	45kg	813mm
Using Three Hinges	59kg	864mm	59kg	813mm

\*NOTE: Do not exceed maximum door weight or width when choosing proper quantity of hinges.

## Melbourne Series



**Cat. No. MEL037XX**  
Wall Mount Full Back Plate



**Cat. No. MEL044XX**  
Wall Mount Offset Back Plate



**Cat. No. MEL024XX**  
Wall Mount Offset Back Plate with Cover Plate



**Cat. No. MEL180XX**  
180° Glass-to-Glass

### Specifications

**Glass Thickness:** 8mm to 12mm Toughened Safety Glass

**Construction:** Solid Brass

**Hinge Swings:** 90° in and 90° out (at factory set position)

**Closing Type:** Self-Centring when within 15° of closed position

**Cut-Out Required**

**Includes:** Gaskets, screws, and glass fabrication dimensions

**Standard:** DIN EN14428



Maximum Capacities	8mm to 12mm glass	
	Weight	Door Width
Using Two Hinges	45kg	762mm
Using Three Hinges	54kg	864mm

\*NOTE: Do not exceed maximum door weight or width when choosing proper quantity of hinges.

## Victoria Series



**Cat. No. VCT037XX**  
Wall Mount Full Back Plate



**Cat. No. VCT180XX**  
180° Glass-to-Glass

### Specifications

**Glass Thickness:** 10mm to 12mm Toughened Safety Glass

**Construction:** Solid Brass

**Hinge Swings:** 90° in and 90° out (at factory set position)

**Closing Type:** Self-Centring when within 15° of closed position

**Cut-Out Required**

**Includes:** Gaskets, screws, and glass fabrication dimensions

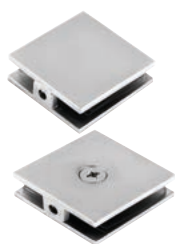
**Standard:** DIN EN14428



Maximum Capacities	8mm to 12mm glass	
	Weight	Door Width
Using Two Hinges	64kg	1m

\*NOTE: Do not exceed maximum door weight or width when choosing proper quantity of hinges.

## Clamps for Geneva Series



**Cat. No. SCU4XX**  
Square Wall Mount Clamp  
(Hole-in-Glass Style)

**Cat. No. SCU48CH\***  
Chrome finish only

Size: 51mm W x 51mm H



**Cat. No. SGC180XX**  
Square 180° Glass-to-Glass  
Clamp

Size: 127mm W x 51mm H



**Cat. No. SGCU1G**  
Replacement Gasket  
Notch Style



**Cat. No. SGCU1XX**  
Square Wall Mount Clamp  
(Notch-in-Glass Style)

Size: 51mm W x 51mm H



**Cat. No. SGC90XX**  
Square 90° Glass-to-Glass  
Clamp

Each Leg Size: 64mm W x  
51mm H



**Cat. No. SCU4G**  
Replacement Gasket  
Hole Style



**Cat. No. SGC037XX**  
Fixed Panel Square Clamp  
(with Small Leg)

Clamp Size: 51mm W x  
51mm H

Leg Size: 35mm W x 51mm



**Cat. No. SGC186XX**  
Square Wall Mount Movable  
Transom Clamp

51mm W x 51mm H



**Cat. No. GE090SXX†**  
Glass-to-Glass Bracket

Satin Nickel and  
Satin Chrome only



**Cat. No. SGC039XX**  
Fixed Panel Square Clamp  
(with Large Leg)

**Cat. No. SGC0398CH\***  
Chrome finish only

Clamp Size: 51mm W x  
51mm H

Leg Size: 51mm W x  
51mm H



**Cat. No. SGC188XX**  
Square 180° Glass-to-Glass  
Movable Transom Clamp

Size: 103mm W x 51mm H



**Cat. No. GE90SXX†**  
Wall Mount Bracket

### Specifications

**Glass Thickness:** 10mm to 12mm  
(\*SCU48CH & SGC0398CH: 8mm only)  
(†GE090S & GE90S: 8mm to 12mm glass)

**Construction:** Solid Brass

**Glass Fabrication Required:** SGCU1 requires notch; other clamps require holes or hole and notch combination

**Includes:** Mounting screws and gaskets



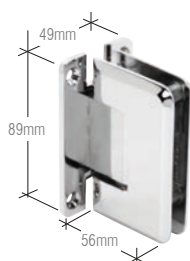
A modern walk-in shower with glass doors, mosaic tiles, and a built-in bench. The shower is set in a bathroom with wooden flooring and a grey towel hanging on the wall. The shower area features a built-in bench with a white countertop, a glass door with a silver handle, and a wall of small square mosaic tiles. A brown towel is hanging on the wall to the left of the shower. On the bench, there are two bottles of shower products, one gold and one white. A grey bath mat is on the floor outside the shower.

# Pinnacle Series

Other finishes available as shown in flip out chart at the rear of this brochure



## Pinnacle Series


**Cat. No. P1N037XX**

Wall Mount Full Back Plate Standard Model (Factory set for standard closing position)

**Cat. No. P1N537XX**

5° Pre-Set Model  
(Factory set for 5° tighter closure into shower interior)

**Cat. No. P1N337XX**

Adjustable Wall Mount Full Back Plate


**Cat. No. P1N180XX**

180° Glass-to-Glass Standard Model (Factory set for standard closing position)

**Cat. No. P1N580XX**

5° Pre-Set Model (Factory set for 5° tighter closure into shower interior)

**Cat. No. P1N380CHXX**

Adjustable 180° Glass-to-Glass


**Cat. No. P1N074XX**

Wall Mount Short Back Plate Standard Model (Factory set for standard closing position)

**Cat. No. P1N574XX**

5° Pre-Set Model  
(Factory set for 5° tighter closure into shower interior)


**Cat. No. P1N045XX**

135° Glass-to-Glass

**Cat. No. P1N345XX**

Adjustable 135° Degree Glass-to-Glass


**Cat. No. P1N044XX**

Wall Mount Offset Back Plate Standard Model  
(Factory set for standard closing position)

**Cat. No. P1N544XX**

5° Pre-Set Model  
(Factory set for 5° tighter closure into shower interior)

**Cat. No. P1N344XX**

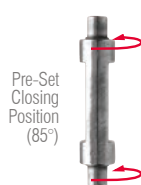
Offset Wall Mount Adjustable Pinnacle


**Cat. No. P1N092XX**

90° Glass-to-Glass

**Pivot Pin**

See [crlaurence.co.uk](http://crlaurence.co.uk) for more Pivot Pin information


**Cat. No. GENP1NN**

Custom Pivot Pin


**Cat. No. P1NGASK**

**Cat. No. P1NGASKCLR**  
Gasket Replacement Kit For Pinnacle

### Specifications

**Glass Thickness:** 8mm to 12mm Toughened Safety Glass

**Special Feature:** Wall Mount Hinges and 180° Glass-to-Glass Hinge offer a choice of a Standard Model, factory set at standard closing position (0°), or a 5° Pre-Set Model for tighter closure into shower interior

**Construction:** Solid Brass

**Hinge Swings:** 90° in and 90° out

**Closing Type:** Self-centring when within 15° of closed position

**Cut-Out Required**

**Includes:** Gaskets, screws, and glass fabrication dimensions

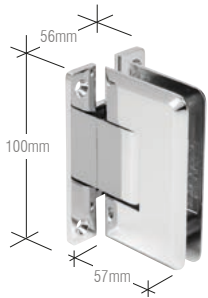
**Standard:** DIN EN14428



Maximum Capacities	8mm and 10mm glass		12mm glass	
	Weight	Door Width	Weight	Door Width
Using Two Hinges	36kg	711mm	36kg	711mm
Using Three Hinges	54kg	813mm	54kg	813mm

\*NOTE: Do not exceed maximum door weight or width when choosing proper quantity of hinges.

## Cologne Series



**Cat. No. C0L037XX**  
Wall Mount Full Back Plate  
Standard Model

**Cat. No. C0L537XX**  
5° Pre-Set Model  
(Factory set for 5° tighter closure into shower interior)

**Cat. No. C0L337XX**  
Adjustable Wall Mount Full Back Plate

**Cat. No. C0L067XX**  
Wall Mount Positive Close Hinge



**Cat. No. C0L180XX**  
180° Glass-to-Glass

**Cat. No. C0L380XX**  
Adjustable 180° Glass-to-Glass

**Cat. No. C0L780XX**  
Glass Positive Close Cologne Hinge



**Cat. No. C0L044XX**  
Wall Mount Offset Back Plate Standard Model  
(Factory set for standard closing position)

**Cat. No. C0L544XX**  
5° Pre-Set Model  
(Factory set for 5° tighter closure into shower interior)



**Cat. No. C0L045XX**  
135° Glass-to-Glass (factory set for standard closing position)



**Cat. No. C0L092XX**  
90° Glass-to-Glass



**Cat. No C0LGK1**  
Gasket Replacement Kit For Cologne

For Pivot Pin, see Cat. No. V1EP1N on page 9



### Specifications

**Glass Thickness:** 10mm to 12mm Toughened Safety Glass

**Construction:** Solid Brass

**Hinge Swings:** 90° in and 90° out (at factory setting)

**Closing Type:** Self-centreing when within 15° of closed position

**Cut-Out Required**

**Includes:** Gaskets, screws, and glass fabrication dimensions

**Standard:** DIN EN14428

Hinge	Maximum Capacities	10mm glass		12mm glass	
		Weight	Door Width	Weight	Door Width
All Cologne hinges except C0L044 & C0L544	Using Two Hinges	50kg	914mm	50kg	914mm
	Using three hinges	63kg	914mm	63kg	914mm
C0L044 & C0L544	Using Two Hinges	45kg	864mm	45kg	864mm
	Using Three Hinges	59kg	864mm	59kg	864mm

NOTE: Do not exceed maximum door weight or width when choosing proper quantity of hinges.

## Plymouth Series



**Cat. No. PLY037XX**  
Wall Mount Full Back Plate

### Specifications

**Glass Thickness:** 10mm to 12mm Toughened Safety Glass

**Construction:** Solid Brass

**Hinge Swings:** 90° in and 90° out (at factory setting)

**Closing Type:** Self-Centreing when within 15° of closed position

**Cut-Out Required**

**Includes:** Gaskets, screws and glass fabrication dimensions



**Cat. No. PLY180CH**  
180° Glass-to-Glass

Maximum Capacities	10mm to 12mm glass	
	Weight	Door Width
Using Two Hinges	64kg	1m

\*NOTE: Do not exceed maximum door weight or width when choosing proper quantity of hinges.



## Clamps for Pinnacle series



**Cat. No. BCU4XX**  
Square Wall Mount Clamp  
(Hole-in-Glass Style)

**Cat. No. BCU48CH**  
For 8mm Glass. Chrome finish only

Size: 51mm W x 51mm H

Glass Thickness Range:  
10mm to 12mm



**Cat. No. BGC180XX**  
Square 180° Glass-to-Glass  
Clamp

Size: 127mm W x 51mm H

Glass Thickness Range:  
10mm to 12mm



**Cat. No. P1090XX**  
Pinnacle and Prima Series  
Glass-to-Glass Bracket

Glass Thickness Range:  
8mm to 12mm



**Cat. No. BGC1XX**  
Square Wall Mount Clamp  
(Notch-in-Glass Style)

Size: 51mm W x 51mm H

Glass Thickness Range:  
10mm to 12mm



**Cat. No. BGC135XX**  
Square 135° Glass-to-Glass  
Clamp

Each Leg Size:  
64mm W x 51mm H

Glass Thickness Range:  
10mm to 12mm



**Cat. No. P190SXX**  
Pinnacle and Prima Series Wall  
Mount Bracket

Glass Thickness Range:  
8mm to 12mm



**Cat. No. BGC037XX**  
Fixed Panel Square Clamp  
(with Small Leg)

**Cat. No. BGC0398CH**  
Fixed Panel Bevelled Clamp (with  
Large Leg) Chrome Finish Only

Glass Thickness Range:  
10mm to 12mm



**Cat. No. BGC90XX**  
Square 90° Glass-to-Glass  
Clamp

Each Leg Size:  
64mm W x 51mm H

Glass Thickness Range:  
10mm to 12mm



**Cat. No. BGC1G**  
Replacement Gasket  
Notch Style



**Cat. No. BGC039XX**  
Fixed Panel Square Clamp  
(with Large Leg)

Clamp Size: 51mm W x 51mm H

Leg Size: 51mm W x 51mm H

Glass Thickness Range:  
10mm to 12mm



**Cat. No. BGC188XX**  
Square 180° Glass-to-Glass  
Movable Transom Clamp

Size: 103mm W x 51mm H

Glass Thickness Range:  
10mm to 12mm



**Cat. No. BCU4G**  
Replacement Gasket  
Hole Style

## Radius Corner Clamps



**Cat. No. UC77XX**  
Traditional Style Fixed Panel U-Clamp

Glass Thickness Range:  
8mm to 12mm

Hole Diameter Required:  
16 or 19mm



**Cat. No. GCB184XX**  
180 Degree Traditional Style  
Double Stud Glass-to-Glass  
Clamp

Glass Thickness Range:  
8mm to 12mm

Hole Diameter Required:  
16 or 19mm



**Cat. No. ADJ037XX**  
Adjustable Wall Mount Clamp

Size: 49mm Wide x 44mm High

Glass Thickness Range:  
8mm to 12mm

Hole Diameter Required: 22mm

Includes: Mounting Screws (for Wall Clamps) and Clear Gasket  
\*An additional set of clear gaskets (Cat. No. UCG77) is required for 8mm glass.

Includes: Gaskets.  
\*An additional set of gaskets is required for 8mm glass (Cat. No. GCBG184).

Includes: Clear Gaskets and Mounting Screw



**Cat. No. GCB182XX**  
180 Degree Traditional Style Split  
Face and "Y" Inline Glass-to-Glass  
Clamp

Glass Thickness Range:  
8mm to 12mm

Hole Diameter Required:  
16 or 19mm



**Cat. No. GCB90XX**  
90 Degree Traditional Style  
Glass-to-Glass Clamp

Glass Thickness Range:  
8mm to 10mm

Hole Diameter Required: 16  
or 19mm



**Cat. No. ADJ180XX**  
Adjustable Glass-to-Glass Mount  
Clamp

Size: 49mm Wide (each leg) x  
44mm High

Glass Thickness Range: 8mm  
to 12mm

Hole Diameter Required: 22mm

Includes: Gaskets, Screw for "Y" Inline Clamp use.  
\*An additional set of gaskets is required for 8mm glass (Cat. No. UCG77).

Includes: Gaskets and Wood Screw for wall mount application.  
\*An additional set of gaskets is required for 8mm glass (Cat. No. UCG77).

Includes: Clear Gaskets and Mounting Screw



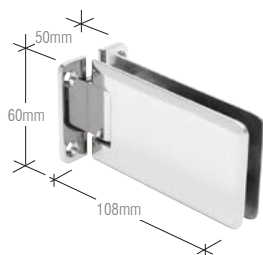


# Grande Series

Other finishes available as shown in flip out chart at the rear of this brochure



## Grande Series



**Cat. No. GRA037**  
Wall Mount Standard Back Plate

**Cat. No. GRA337**  
Adjustable Wall Mount Full Back Plate



**Cat. No. GRA180**  
180° Glass-to-Glass

**Cat. No. GRA380XX**  
Adjustable 180° Degree Glass-to-Glass



**Cat. No. GRA044**  
Wall Mount Offset Back Plate (Allows clean sight line from shower exterior)

**Cat. No. GRA344**  
Wall Mount Offset Back Plate



**Cat. No. GRA135XX**  
135 Degree Glass-to-Glass Hinge



**Cat. No. GRA090**  
90° Glass-to-Glass

**Cat. No. GRA390**  
Adjustable 90° Glass-to-Glass

### Specifications

**Glass Thickness:** 8mm to 10mm Toughened Safety Glass

**Special Features:** Grande can be side mounted at top and bottom corners of the door, or anywhere in between. Corner mounting allows more glass exposure

**Construction:** Solid Brass

**Hinge Swings:** 90° in and 90° out

**Closing Type:** Precise closing to 0°

**Cut-Out and Hole Required**

**Includes:** Gaskets, screws, and glass fabrication dimensions



Maximum Capacities	8mm glass		10mm glass	
	Weight	Door Width	Weight	Door Width
Using Two Hinges	41kg	787mm	41kg	787mm
Using Three Hinges	61kg	464mm	61kg	864mm

\*NOTE: Do not exceed maximum door weight or width when choosing proper quantity of hinges.

see page 15 for matching clamps

A modern walk-in shower with stone-look wall tiles and a glass partition. The shower features a rainfall showerhead, a handheld showerhead, and a built-in bench. The floor is made of large, light-colored tiles. The text "Riviera Series" is overlaid on the image.

# Riviera Series

## Riviera Series



**Cat. No. R1V037LXX**  
Left Hand Wall Mount Offset Back Plate

**Cat. No. R1V037RXX**  
Right Hand Wall Mount Offset Back Plate



**Cat. No. R1V90XX**  
Fixed Panel Clamp



**Cat. No. R1V044LXX**  
Left Hand Offset Back Plate  
(Allows clean sight line from shower exterior)

**Cat. No. R1V044RXX**  
Right Hand Offset back Plate  
(Allows clean sight line from shower exterior)



**Cat. No. R1VSCREWSET**  
Setting Screw Set



**Cat. No. R1V180LXX**  
Left Hand 180° Glass-to-Glass

**Cat. No. R1V180RXX**  
Right Hand 180° Glass-to-Glass

### Front View



### Rear View



### Specifications

**Glass Thickness:** 8mm to 10mm Toughened Safety Glass

**Construction:** Solid Brass

**Hinge Swings:** Outwards only

**Closing Type:** Self closes from approximately 60°

**Countersunk Holes Required**

**Includes:** Gaskets, screws, flush mount glass attachments, and spanner tool.

**Finishes Available:** Chrome, Brushed Satin Chrome and Brushed Nickel



Maximum Capacities	8mm to 10mm glass	
	Weight	Door Width
Using Two Hinges	36kg	711mm
Using Three Hinges	54kg	86mm

\*NOTE: Do not exceed maximum door weight or width when choosing proper quantity of hinges.



# Altea Series



## Altea Series



**Cat. No. ALT037CH**  
Wall Mount Full Back Plate



**Cat. No. ALTC90CH**  
90° Glass-to-Wall Clamp



**Cat. No. ALT092CH**  
90° Glass-to-Glass



**Cat. No. ALTCL180CH**  
180° Glass-to-Glass Clamp



**Cat. No. ALT180CH**  
180° Glass-to-Glass



**Cat. No. ALTCL90CH**  
Large Glass-to-Wall Clamp



**Cat. No. ALT135CH**  
135° Glass-to-Glass



**Cat. No. ALTC380CH**  
Adjustable Glass-to-Glass Clamp



**Cat. No. ALTC337CH**  
Adjustable Glass-to-Wall Clamp

### Specifications

**Glass Thickness:** 6mm to 10mm  
Toughened Safety Glass

**Construction:** Solid Brass

**Hinge Swings:** Free swinging design

**Closing Type:** Self closes from  
approximately 60°

**Cut-Out Required**

**Includes:** Gaskets, screws and screw covers

**Finishes Available:** Chrome



Maximum Capacities	6mm to 10mm glass	
	Weight	Door Width
Using Two Hinges	36kg	710mm
Using Three Hinges	54kg	810mm

\*NOTE: Do not exceed maximum door weight or width when choosing proper quantity of hinges.



# Oil Dynamic Series



**Cat. No. H8010BTXX**  
Wall Mount Full Back Plate



**Cat. No. H8011BTXX**  
Wall Mount Offset Back Plate



**Cat. No. H8015BTXX**  
180° Glass-to-Glass



**Cat. No. H8060BTXX\***  
Wall-to-Wall

## Specifications

**Glass Thickness:** 8mm to 13.52mm  
(\*H8060BT 8mm to 12mm) Toughened Safety Glass

**Construction:** Aluminium

**Hinge Swings:** 90° inward & outward (except H8060BT model which only swings one way)

**Closing Type:** Automatic closing from 80° to 0°

**Cut-Out Required**

**Includes:** Snap-In moulded gaskets for 8mm to 13.52mm glass and hex screws

Maximum Capacities	8mm to 13.52mm glass	
	Weight	Door Width
Wall Mount Hinges	100kg	1m
Glass-to-Glass Hinges	80kg	1m

\*NOTE: Do not exceed maximum door weight or width when choosing proper quantity of hinges.

see page 11 for matching clamps



## Bilobina Series



Cat. No. H815E10CH  
Wall Mount



Cat. No. H815E50CH  
180° Glass-to-Glass

### Specifications

**Glass Thickness Range:** 6mm to 10mm  
Toughened Safety Glass

**Construction:** Aluminium

**Hinge Swings:** Swings one way only

**Closing Type:** Automatic closing from 80° to 0°  
Cut-Out Required


**Includes:** Gaskets

**Finish Available:** Chrome



Maximum Capacities	6mm to 10mm glass	
	Weight	Door Width
Using Two Hinges	50kg	900mm

\*NOTE: Do not exceed maximum door weight or width when choosing proper quantity of hinges.



# Prima Series

Other finishes available as shown in flip out chart at the rear of this brochure



## Prima Series



**Cat. No. PPH01XX**  
Top or Bottom Mount  
Can be adapted to Deluxe Header Kit

**Cat. No. PPH301XX**  
Adjustable Top or Bottom Mount



**Cat. No. PPH03XX**  
L-Bracket Wall Mount



**Cat. No. PPH06XX**  
Top Mount  
Compatible only with EZ-Adjust Header.  
Use Cat. No. PPH01 as bottom hinge



**Cat. No. PPH135LXX**  
135° Glass-to-Glass  
Left Hand Mount when viewed from outside of shower

**Cat. No. PPH135RXX**  
135° Glass-to-Glass  
Right Hand Mount when viewed from outside of shower



**Cat. No. PPH02XX**  
Glass-to-Glass Transom Mount



**Cat. No. PPH05LXX**  
Offset Bracket Wall Mount  
Left Hand Mount when viewed from outside of shower

**Cat. No. PPH05RXX**  
Offset Bracket Wall Mount  
Right Hand Mount when viewed from outside of shower



**Cat. No. PPH07XX**  
Top or Bottom Mount Pivot Hinge  
with Attached U-Clamp



**Cat. No. PPH0151XX**  
#1 Pin Top or Bottom Mount

**Cat. No. PPH0152XX**  
#2 Pin Top or Bottom Mount

### Specifications

**Glass Thickness:** 8mm to 10mm Toughened Safety Glass

**Special Feature:** Top and Bottom Mount design allows more glass to show. Use of these hinges reduce quantity of cut-outs required when compared to standard side mount glass-to-glass hinges. Cat. No. PPH01 can be mounted floor and ceiling, or floor and header

**Construction:** Solid Brass

**Hinge Swings:** Full Rotation

**Closing Type:** Self-centring when within 15° of closed position

**Cut-Out Required**

**Includes:** Gaskets, Screws, and Glass Fabrication Dimensions

**This hinge series is patented (Patent Number 5297313)**

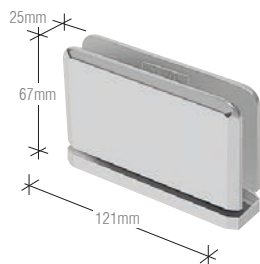


Maximum Capacities	8mm glass		10mm glass	
	Weight	Door Width	Weight	Door Width
Using Two Hinges	45kg	787mm	45kg	787mm

\*NOTE: Do not exceed maximum door weight or width.

see page 15 for matching clamps

## Senior Prima Series



**Cat. No. SRPPH01XX**  
Top or Bottom Mount

For 12mm glass



**Cat. No. SRPPH02XX**  
Glass-to-Glass Mount

For 12mm glass

### Specifications:

**Glass Thickness:** 12mm Toughened Safety Glass

**Junior Prima Special Feature:** Top and bottom mount allows more glass exposure. Can also save on glass fabrication costs when compared to use of Side Mount Glass-to-Glass Hinges requiring more cut-outs.

**Construction:** Solid Brass

**Hinge Swings:** Full Rotation

**Closing Type:** Self-centreing when within 15° of closed position

**Cut-Out Required**

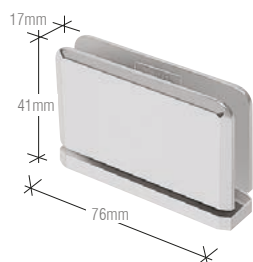
**Includes:** Gaskets, Screws, and Glass Fabrication Dimensions. Adjustable Prima also includes 3mm Allen Wrench.



Maximum Capacities	12mm glass	
	Weight	Door Width
Using Two Hinges	66kg	914mm

\*NOTE: Do not exceed maximum door weight or width.

## Junior Prima Series



**Cat. No. JRPPH01XX**  
Top or Bottom Mount

For 6mm glass



**Cat. No. JRPPH02XX**  
Glass-to-Fixed Transom Mount

For 6mm glass

### Specifications:

**Glass Thickness:** 6mm Toughened Safety Glass

**Junior Prima Special Feature:** Top and bottom mount allows more glass exposure. Can also save on glass fabrication costs when compared to use of Side Mount Glass-to-Glass Hinges requiring more cut-outs.

**Construction:** Solid Brass

**Hinge Swings:** Full Rotation

**Closing Type:** Self-centreing when within 15° of closed position

**Cut-Out Required**

**Includes:** Gaskets, Screws, and Glass Fabrication Dimensions. Adjustable Prima also includes 3mm Allen Wrench.

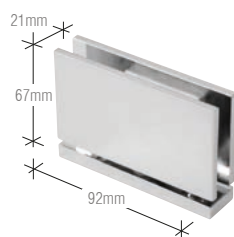


Maximum Capacities	6mm glass	
	Weight	Door Width
Using Two Hinges	28kg	711mm

\*NOTE: Do not exceed maximum door weight or width.

see page 15 for matching clamps

## Cardiff Series



**Cat. No. CAR01XX**  
Top or Bottom Mount



**Cat. No. CAR05RXX**  
L-Bracket Wall Mount - Right Hand Mount When Viewed from Outside of Shower

**Cat. No. CAR05LXX**  
L-Bracket Wall Mount - Left Hand Mount When Viewed from Outside of Shower



**Cat. No. CAR02XX**  
180° Glass-to-Glass



**Cat. No. CAR07XX**  
Top or Bottom Mount Pivot Hinge with Attached U-Clamp

### Specifications:

**Glass Thickness:** 8mm to 10mm Toughened Safety

**Special Features:** Top and Bottom Mount design allows more glass to show. Use of these hinges will reduce quantity of cut-outs required when compared to standard side mount glass-to-glass hinges.

Cat. No. CAR01 can be mounted floor and ceiling, or floor and header.

**Construction:** Solid Brass

**Hinge Swings:** Full Rotation

**Closing Type:** Self-Centering when within 15° of closed position

**Cut-Out Required**

**Includes:** Gaskets, screws, and glass fabrication dimensions

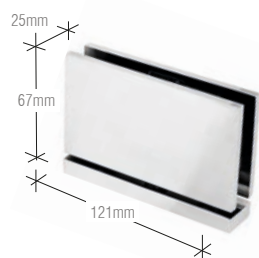
This hinge series is patented (Patent Number 5297313)



Maximum Capacities	8mm to 10mm glass	
	Weight	Door Width
Using Two Hinges	45kg	787mm

\*NOTE: Do not exceed maximum door weight or width.

## Senior Cardiff Series



**Cat. No. SRCAR01XX**  
Senior Cardiff Top or Bottom Mount

### Specifications:

**Glass Thickness:** 12mm Toughened Safety Glass

**Special Features:** Top and Bottom Mount design allows more glass to show. Use of these hinges will reduce quantity of cut-outs required when compared to standard side mount glass-to-glass hinges.

Cat. No. CAR01 can be mounted floor and ceiling, or floor and header.

**Construction:** Solid Brass

**Hinge Swings:** Full Rotation

**Closing Type:** Self-Centering when within 15° of closed position

**Cut-Out Required**

**Includes:** Gaskets, screws, and glass fabrication dimensions

This hinge series is patented (Patent Number 5297313)



Maximum Capacities	12mm glass	
	Weight	Door Width
Using Two Hinges	66kg	914mm

\*NOTE: Do not exceed maximum door weight or width.

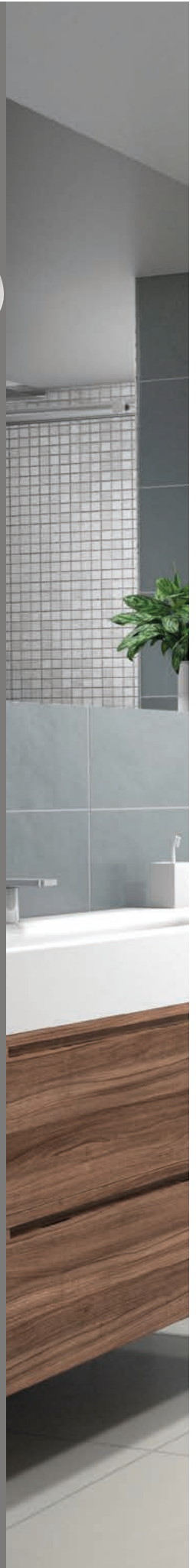
see page 11 for matching clamps

# 2

## Sliding Shower Doors

CRL's latest Sliding Shower Door Systems provide frameless hardware which gives a sleek and minimalistic appearance.

Our Sliding Shower Door Systems are available in several lengths and finishes and can accommodate a wide range of shower designs.









# Serenity



# Serenity

**Cat. No. SER78XX**  
Deluxe 180° Serenity Kit

**Standard 180 Degree Kit Includes:**

- 1 - 2m length header support bar
- 2 - Rollers
- 2 - Stoppers
- 2 - Anti-lift fittings
- 2 - Track holder fittings for wall
- 2 - Track holder fittings for fixed panel
- 1 - Thru-glass pull
- 1 - Door guide



**Cat. No. SER90XX**  
Accessory kit for 90 degree return  
Connects to wall fitting for 90 degree installations



**Cat. No. SERAHW2XX**  
Track Holder Fittings for Wall



**Cat. No. SERH2XX**  
Serenity Series Sliding Door 2m Header  
Support Bar Only



**Cat. No. SERFP2XX**  
Track Holder Fittings for Fixed Panel - 2/Pk



**Cat. No. SERNR1XX**  
New Style Replacement Roller for SER78BS



**Cat. No. SERNG2XX**  
Replacement Door Guide for Fixed  
Panel Attachment



**Cat. No. SERNS1XX**  
Replacement Door Stopper for SER78BS



**Cat. No. DK98LXX**  
Replacement Clear Plastic L-Shaped Vinyl



**Cat. No. SERNHP2XX**  
Thru-Glass Pull



**Cat. No. SERC2XX**  
90 Degree Door Connector Bracket for  
Serenity Sliders

## Specifications:

**Glass Thickness Range:** 8mm to 10mm Toughened Safety Glass

**Construction:** Stainless Steel

**Glass Fabrication Required:** Holes required in both door & fixed panel

**Includes:** Gaskets, screws & glass fabrication information. Complete installation instructions, along with glass & metal cutting formula available at [crlaurence.co.uk](http://crlaurence.co.uk)

**Finishes Available:** Polished or Brushed Stainless Steel





# Hydroslide



# Hydroslide

## Standard 180 Degree Kit Includes:

- 1 - Sliding glass door upper track
- 2 - Hangers for sliding glass door
- 2 - Sliding glass door rollers
- 2 - Sliding glass door roller stops
- 1 - Sliding glass door floor guide
- 2 - 90 degree wall-to-upper track connectors
- 2 - 180 degree glass-to-sliding track connectors
- 1 - 914mm half-round sdt980 threshold
- 1 - 2489mm DK98L L-seal for wall

NOTE: Bottom fixed glass attachments, handles or knobs must be ordered separately.



**Cat. No. HYDK60XX**  
1.52m 180° Kit

**Cat. No. HYDK84XX**  
2.13m 180° Kit



**Cat. No. HYD60XX**  
1524mm Upper Track

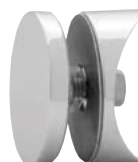
**Cat. No. HYD84XX**  
2134mm Upper Track



**Cat. No. HYD03XX**  
Kit Consists Of One Floor Guide And Two Screws



**Cat. No. HYDA90XX**  
90° Wall-to-Glass Accessory Kit



**Cat. No. HYD180XX**  
For Attaching The Fixed Glass To The Sliding Shower Door Upper Track In 180° Installations.



**Cat. No. HYD01XX**  
Kit Consists Of Two Rollers, Two Glass Hangers And Two Snap-In Screw Covers



**Cat. No. HYDG90XX**  
For Attaching The Fixed Glass To The Sliding Shower Door Upper Track In 90° Installations.



**Cat. No. HYD02**  
Black  
Kit Consists Of Two Roller Stops With Screws.



**Cat. No. HYDW90XX**  
For Attaching The Sliding Shower Door Upper Track To A Wall At 90°.



**Cat. No. HYD04XX**  
Kit Consists Of Two Snap-In Screw Covers



**Cat. No. HYD05XX**  
For Securing A Glass Panel At 90° To The Wall. Includes Two Screws And Snap-In Screw Covers

## Specifications:

**Glass Thickness:** 8mm to 10mm Toughened Safety Glass

**Construction:** Plated or Lacquered Solid Brass Fittings;  
Anodized Aluminum Sliding Door Track

**Maximum Door Weight:** 40kg

**Fabrication:** Holes required in fixed panel and door

**Includes:** Gaskets, screws, and glass fabrication information. Complete installation instructions, along with glass and metal cutting formula, available at [crlaurence.co.uk](http://crlaurence.co.uk)

**Finishes Available:** Chrome and Brushed Nickel



**Cat. No. HYDH90**  
90° Hydroslide Header Bracket

# 3



## Support Bars & Brackets

CRL's wide range of support Bars and Brackets come in a variety of lengths and finishes. It is available in square and round styles and suitable for a range of glass thicknesses

Sold as individual components or complete kits, the range offers an endless choice of configurations to help you create your perfect bathroom.



## Square Support Bar Series



**Cat. No. SQ59XX**  
Length: 1.5m



**Cat. No. SQ47XX**  
45° Mitered Wall Mount Bracket



**Cat. No. SQ41XX**  
Swiveling U-Bracket  
For 6mm to 8mm Glass

**Cat. No. SQ42XX**  
Swiveling U-Bracket  
For 10mm to 12mm Glass



**Cat. No. SQ48XX**  
22.5° Mitered Wall Mount Bracket



**Cat. No. SQ43XX**  
Movable Bracket  
For 6mm to 8mm Glass

**Cat. No. SQ44XX**  
Movable Bracket  
For 10mm to 12mm Glass



**Cat. No. SQ49XX**  
Adjustable Wall Mount Bracket



**Cat. No. SQ45XX**  
Movable Bracket



**Cat. No. SQ50XX**  
"T" Junction Bracket



**Cat. No. SQ46CH**  
Wall Mount Bracket

### Specifications:

**Glass Thickness Range:** 6mm to 8mm and 10mm to 12mm glass



**Construction:** 19mm square tubing, solid brass fittings

**Includes:** All required mounting hardware

Other finishes available as shown in flip out chart at the rear of this brochure



## Slimline Support Bar Series

 <p><b>Cat. No.</b> <b>SQJ39XX</b> Length: 1m</p> <p><b>Cat. No.</b> <b>SQJ80XX</b> Length: 2m</p>	 <p><b>Cat. No.</b> <b>SQJ41XX</b> Swiveling U-Bracket</p>	 <p><b>Cat. No.</b> <b>SQJ50XX</b> T Junction Bracket</p>
 <p><b>Cat. No.</b> <b>SQJ43XX</b> Movable Bracket</p>	 <p><b>Cat. No.</b> <b>SQJ41DXX</b> Swiveling Flush Mounted U-Bracket</p>	
 <p><b>Cat. No.</b> <b>SQJ49XX</b> Adjustable Wall Mount Bracket</p>	 <p><b>Cat. No.</b> <b>SQJ46XX</b> Wall Mount Bracket</p>	

### Specifications:

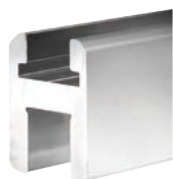
**Glass Thickness Range:** 6mm to 8mm glass

**Construction:** 15mm slimline square tubing, solid brass fittings

**Includes:** All required mounting hardware

## Deluxe Shower Door Header Kit

These Fixed Panel Support Bars stabilize fixed panels of glass in enclosures that do not go all the way up to the ceiling. Bars are available in two lengths, and in sizes to secure 6mm to 12mm thick glass. Finishes are available to match most of our hinges, knobs, and pull handles. No holes or cut-outs are required in the glass.



SQH Series

**Cat. No.** SQH980XX  
Length: 2.49m

### Kit Contains

- Piece of Header Extrusion
- 91m Piece of Snap-In Filler for Door Pocket
- Vinyl for 8mm and 10mm Glass (not needed for 12mm)
- Pack of two SHB100 Aluminium Wall Mounting Brackets and pack of two BWB2 Brass Wall Mounting Brackets (use set of your choice)

## Tall base Glass Clamp Series



**Cat. No.** CMC1XX

### Specifications:

**Glass Thickness Range:** 10mm to 12mm Toughened Safety Glass

**Construction:** Solid Brass

**Glass Fabrication Required:** 12mm diameter hole

**Includes:** Gaskets and screws

## Round Support Bar Series



**Cat. No. S1XX**  
Length: 1m

**Cat. No. S2XX**  
Length: 1.3m

**Cat. No. S80**  
Length: 2.03m



**Cat. No. S8XX**  
90° Corner Bracket



**Cat. No. S3XX**  
Wall Mount Fitting



**Cat. No. S9XX**  
Vertical Support Bracket for  
6mm to 8mm Glass

**Cat. No. S910XX**  
Vertical Support Bracket for  
10mm to 12mm Glass



**Cat. No. S4XX**  
Swiveling U-Bracket for 6mm to 8mm Glass

**Cat. No. S5XX**  
Swiveling U-Bracket for 10mm to 12mm Glass



**Cat. No. S12XX**  
Wall Mount Fitting



**Cat. No. S6XX**  
Movable U-Bracket for 6mm to 8mm Glass

**Cat. No. S7XX**  
Movable U-Bracket for 10mm to 12mm Glass



**Cat. No. S13XX**  
Glass Mount Fitting for  
6mm to 12mm Glass

### Specifications:

**Glass Thickness Range:** 6mm to 8mm, and 10mm to 12mm glass

**Construction:** 19mm diameter tubular bar, solid brass fittings

**Includes:** All required Mounting Hardware



Wall-to-Glass



Glass-to-Glass

### Wall-to-Glass Support Bars

**Cat. No. SUP06XX**  
For 6mm to 8mm glass, 1m length

**Cat. No. SUP10XX**  
For 10mm to 12mm glass, 1m length

**Cat. No. SUP10XX51**  
For 10mm to 12mm glass, 1.3m length

### Glass-to-Glass Support Bars

**Cat. No. SUP26XX**  
For 6mm to 8mm glass, 1m length

**Cat. No. SUP20XX**  
For 10mm to 12mm glass, 1m length

**Cat. No. SUP20XX51**  
For 10mm to 12mm glass, 1.3m length

### Specifications:

**Glass Thickness Range:**  
6mm to 8mm, and 10mm to 12mm

**Construction:** 19mm Diameter Tubular  
Brass Bar, Solid Brass Fittings

**Bar Lengths:** 1m; 1.3m

**Includes:**  
All required mounting hardware

## Through-Glass Mounted Support Bar

The Through-Glass Mounted Support Bar creates a means of support that strengthens an enclosure's structural integrity. It may be used in place of a header in certain applications (call for details) and can be mounted to a wall, ceiling or glass-to-glass. Supplied Bar is 991mm long, requires a 16mm hole in the glass, and comes in finishes to match our Hinges and Pull Handles. All mounting hardware included.

Ideal for use as a Shower Curtain Rod



### Cat. No. TUBE3472XX

Thru-Glass to Wall Rod

Requires additional fitting for wall attachment  
i.e. S3 or S12

### Specifications

**Construction:** 19mm diameter stainless steel tubing

**Bar Lengths:** 1.83m

**Glass Thickness Range:** 6mm to 12mm

**Glass Fabrication Required:** 12mm diameter hole

**Includes:** 19mm diameter end cap on one end

Polished Stainless (PS) shown, also available in Brushed Stainless (BS). For details please see the flip out chart at the rear of this brochure or visit [crlaurence.co.uk](http://crlaurence.co.uk)



### Cat. No. SUP135XX

Wall Mount

### Cat. No. SUP135G2GXX

Glass-to-Glass Mount

### Specifications

**Construction:** Solid brass

**Glass Fabrication Required:** 16mm diameter hole

**Includes:** All required mounting hardware

## Mitred Support Bar Bracket

The Mitred Support Bar Wall Mount Bracket is designed to attach to the wall by slipping over a screw mounted stud that is secured into the wall. Perfect for an inline panel needing to be secured to an adjacent wall for stability. The Bracket comes in matching finishes, and fits any of our Fixed Panel Support Bars. Mitre of Bracket ensures flush fit against wall.



Cat. No. SBB45



Cat. No. SBB22

### Cat. No. SBB45XX

45° Bracket

### Cat. No. SBB22XX

22.5° Bracket

### Specifications

A great solution for inline enclosures requiring fixed panel support when a header is not desired

**Construction:** Solid Brass

**Includes:** Screw mounted stud



45° Bracket



22.5° Bracket

# 4

## U-Channels & Accessories for Showers

Our Regular and Deep U-Channels for Shower Door installations will secure fixed panels of Toughened Safety Glass to the wall, ceiling and floor.

In this section you will also find Accessories such as our large range of Door Knobs, Handles and Towel Bars that will add a touch of elegance to your bathroom. Their sleek and subtle appearance provides a minimalistic look.

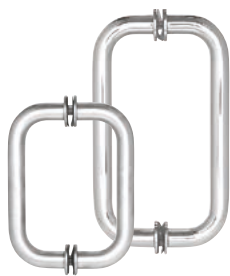
To complete the door, you can also take a look at our extensive range of shower seals.







# Handles



## BM Series Back-to-Back Pull Handles

**Cat. No. BM6X6XX**  
152mm size with metal washers

**Cat. No. BM8X8XX**  
203mm size with metal washers



## MT Series Back-to-Back Pull Handles

**Cat. No. MT6X6XX**  
152mm size with metal washers

**Cat. No. MT8X8XX**  
203mm size with metal washers



## BM Series Back-to-Back Pull Handles

**Cat. No. BMNW6X6XX**  
152mm size without metal washers

**Cat. No. BMNW8X8XX**  
203mm size without metal washers



## RM Series Flat Outside Surface/ Round Tubing Inside Back-to-Back Pull Handles

**Cat. No. RM6X6XX**  
152mm size without metal washers

**Cat. No. RM8X8XX**  
203mm size without metal washers



## Crescent Style Back-to-Back Pull Handles

**Cat. No. CSH6X6XX**  
152mm size without metal washers

**Cat. No. CSH8X8XX**  
203mm size without metal washers



## SQ Series Square Tubing Mitred Corner Back-to-Back Pull Handles

**Cat. No. SQ6X6XX**  
152mm size without metal washers

**Cat. No. SQ8X8XX**  
203mm size without metal washers

### Specifications:

**Glass Thickness Range:** 6mm to 12mm Toughened Safety Glass

**Construction:** 19mm diameter brass tubing

**Hole Diameter Required:** 12mm

**Mounting Holes:** 152mm and 203mm Centre-to-Centre



## Ladder Style Back-to-Back Pull Handle

**Cat. No. LP6X6XX**  
152mm Handle, 19mm diameter

**Cat. No. LP8X8XX**  
203mm Handle, 32mm diameter

### Specifications:

**Glass Thickness:** 8mm to 12mm

**Construction:** Brass

**Hole Diameter Required:** 12mm

**Mounting Holes:** 152mm and 203mm  
Centre-to-Centre



## Ladder Pull Handles

**Cat. No. EULP30019XX**  
300mm length, 19mm diameter,  
200mm Centre-to-Centre

**Cat. No. EULP40019XX**  
400mm length, 19mm diameter,  
250mm Centre-to-Centre

**Cat. No. EULP50019XX**  
500mm length, 19mm diameter,  
350mm Centre-to-Centre

**Cat. No. EULP60032XX**  
600mm length, 32mm diameter,  
450mm Centre-to-Centre

**Cat. No. EULP100032XX**  
1000mm length, 32mm diameter,  
800mm Centre-to-Centre

### Specifications:

**Glass Thickness:** 8mm to 19mm



**Construction:** Stainless Steel

**Hole Diameter Required:** 12mm

# Knobs

 <p><b>Cat. No. SDK106XX</b> Back-to-Back Contemporary Style</p> <p><b>Glass Thickness:</b> 6mm to 12mm <b>Hole Diameter Required:</b> 12mm</p>	 <p><b>Cat. No. SDK140XX</b> Back-to-Back E-Z Grip Style</p> <p><b>Glass Thickness:</b> 6mm to 12mm <b>Hole Diameter Required:</b> 12mm</p>
 <p><b>Cat. No. SDK160XX</b> Back-to-Back Square Style</p> <p><b>Glass Thickness:</b> 6mm to 12mm <b>Hole Diameter Required:</b> 12mm</p>	 <p><b>Cat. No. SDK120XX</b> Back-to-Back Euro Style</p> <p><b>Glass Thickness:</b> 6mm to 12mm <b>Hole Diameter Required:</b> 12mm</p>
 <p><b>Cat. No. SDK180XX</b> Back-to-Back Paddle Style</p> <p><b>Glass Thickness:</b> 6mm to 12mm <b>Hole Diameter Required:</b> 12mm</p>	 <p><b>Cat. No. SDK109XX</b> Back-to-Back Bow Tie Style</p> <p><b>Glass Thickness:</b> 6mm to 12mm <b>Hole Diameter Required:</b> 12mm</p>
 <p><b>Cat. No. ALTSBK1XX</b> Single Sided Altea Series</p> <p><b>Cat. No. ALTSBK2XX</b> Back-to-Back Altea Series</p> <p><b>Glass Thickness:</b> 6mm to 10mm <b>Hole Diameter Required:</b> 12mm</p>	 <p><b>Cat. No. SDK112XX</b> Back-to-Back Cylinder Style</p> <p><b>Cat. No. SDKP112XX</b> Back-to-Back Cylinder Style with Plastic Sleeve</p> <p><b>Glass Thickness:</b> 6mm to 12mm <b>Hole Diameter Required:</b> 12mm</p>
 <p><b>Cat. No. LAT001XX</b> 180° Knob Latch</p> <p><b>Cat. No. LAT135XX</b> 135° Knob Latch</p> <p><b>Glass Thickness:</b> 8mm to 12mm <b>Hole Diameter Required:</b> 22mm</p>	 <p><b>Cat. No. SDK140CHEU</b> Back-to-back 40mm Diameter</p> <p><b>Glass Thickness:</b> 6mm to 12mm</p>

## Altea range door knobs

 <p><b>Cat. No. EUSDK1XX</b> Back-to-Back Euro Style Chrome Plated</p>	 <p><b>Cat. No. EUSDK2XX</b> Back-to-Back Euro Style Aluminium</p> <p><b>Glass Thickness:</b> 8mm to 10mm glass <b>Hole Diameter required:</b> 10mm</p>
---------------------------------------------------------------------------------------------------------------------------------------------------------------	-----------------------------------------------------------------------------------------------------------------------------------------------------------------------------------------------------------------------------------------------------

## Specifications:

**Construction:** Solid Brass, except EUSDK2 in Plated Aluminium



## Towel Bars



<b>Cat. No. BM12XX</b>	305mm Towel Bar
<b>Cat. No. BM18XX</b>	457mm Towel Bar
<b>Cat. No. BM20XX</b>	508mm Towel Bar
<b>Cat. No. BM22XX</b>	559mm Towel Bar
<b>Cat. No. BM24XX</b>	610mm Towel Bar
<b>Cat. No. BM26XX</b>	660mm Towel Bar
<b>Cat. No. BM27XX</b>	686mm Towel Bar
<b>Cat. No. BM28XX</b>	711mm Towel Bar
<b>Cat. No. BM30XX</b>	762mm Towel Bar



<b>Cat. No. BMNW12XX</b>	305mm Towel Bar
<b>Cat. No. BMNW18XX</b>	457mm Towel Bar
<b>Cat. No. BMNW20XX</b>	508mm Towel Bar
<b>Cat. No. BMNW22XX</b>	559mm Towel Bar
<b>Cat. No. BMNW24XX</b>	610mm Towel Bar
<b>Cat. No. BMNW26XX</b>	660mm Towel Bar
<b>Cat. No. BMNW27XX</b>	686mm Towel Bar
<b>Cat. No. BMNW28XX</b>	711mm Towel Bar
<b>Cat. No. BMNW30XX</b>	762mm Towel Bar



<b>Cat. No. CSH18XX</b>	457mm Towel Bar
<b>Cat. No. CSH24XX</b>	610mm Towel Bar



<b>Cat. No. SQ18XX</b>	457mm Towel Bar
<b>Cat. No. SQ24XX</b>	610mm Towel Bar



<b>Cat. No. MT18XX</b>	457mm Towel Bar
<b>Cat. No. MT24XX</b>	610mm Towel Bar



<b>Cat. No. BM12X12XX</b>	305mm Towel Bar
<b>Cat. No. BM18X18XX</b>	457mm Towel Bar
<b>Cat. No. BM24X24XX</b>	610mm Towel Bar
<b>Cat. No. BM30X30XX</b>	762mm Towel Bar



<b>Cat. No. BMNW12X12XX</b>	305mm Towel Bar
<b>Cat. No. BMNW18X18XX</b>	457mm Towel Bar
<b>Cat. No. BMNW24X24XX</b>	610mm Towel Bar
<b>Cat. No. BMNW30X30XX</b>	762mm Towel Bar

### Specifications

**Construction:** 19mm Diameter Brass Tubing (1.5mm thick); 31.8mm Diameter Metal Washers

**Glass Thickness:** 6mm to 12mm

**Hole Diameter Required:** 12mm





## Towel Bars



Cat. No. SQ18X18XX

457mm Towel Bar

Cat. No. SQ24X24XX

610mm Towel Bar



Cat. No. MT18X18XX

457mm Towel Bar

Cat. No. MT24X24XX

610mm Towel Bar



Pull Handle/ Towel Bar  
Combination

Cat. No. BM6X12XX

152mm Pull / 305mm Towel Bar

Cat. No. BM6X18XX

152mm Pull / 457mm Towel Bar

Cat. No. BM6X22XX

152mm Pull / 559mm Towel Bar

Cat. No. BM6X24XX

152mm Pull / 610mm Towel Bar

Cat. No. BM8X18XX

203mm Pull / 457mm Towel Bar

Cat. No. BM8X20XX

203mm Pull / 508mm Towel Bar

Cat. No. BM8X22XX

203mm Pull / 457mm Towel Bar

Cat. No. BM8X24XX

203mm Pull / 610mm Towel Bar

Cat. No. BM12X24XX

305mm Pull / 610mm Towel Bar



Pull Handle/ Towel Bar  
Combination

Cat. No. BMNW6X12XX

152mm Pull / 305mm Towel Bar

Cat. No. BMNW6X18XX

152mm Pull / 457mm Towel Bar

Cat. No. BMNW6X22XX

152mm Pull / 559mm Towel Bar

Cat. No. BMNW6X24XX

152mm Pull / 610mm Towel Bar

Cat. No. BMNW8X18XX

203mm Pull / 457mm Towel Bar

Cat. No. BMNW8X22XX

203mm Pull / 457mm Towel Bar

Cat. No. BMNW8X24XX

203mm Pull / 610mm Towel Bar

Cat. No. BMNW12X24XX

305mm Pull / 610mm Towel Bar



Door Knob/ Towel Bar  
Combination

Cat. No. TBCC18XX

8" Towel Bar with Contemporary Knob

Cat. No. TBCC24XX

24" Towel Bar With Contemporary Knob



Door Knob/ Towel Bar  
Combination

Cat. No. TBCT18XX

18" Towel Bar With Traditional Knob

Cat. No. TBCT24XX

24" Towel Bar With Traditional Knob

### Specifications

**Construction:** 19mm Diameter Brass Tubing (1.5mm thick); 31.8mm Diameter Metal Washers

**Glass Thickness:** 6mm to 12mm

**Hole Diameter Required:** 12mm



## Door Locks



Exterior View Interior View

**Cat. No. 700CXX**  
Pivot Door Lock/Receiver



Exterior View Interior View

**Cat. No. 703CXX**  
Sliding Door Lock with Indicator



Exterior View Interior View

**Cat. No. 701CXX**  
Pivot Door Lock/Receiver



Exterior View Interior View

**Cat. No. 704CXX**  
Sliding Door Receiver

### Specifications:

**Glass Thickness Range:** 8mm to 12mm  
Toughened Safety Glass

**Glass Fabrication Required:** Notch in glass

**Includes:** Gaskets and hex wrench



**Cat. No. GE90SCAXX**  
Geneva Sliding Block Lock for RPS



**Cat. No. P190SCAXX**  
Pinnacle Sliding Block Lock for RPS



**Cat. No. GE90SCBXX**  
Glass Mount Plate for RPS



**Cat. No. P190SCBXX**  
Pinnacle Glass Mount Plate for RPS



**Cat. No. GE90SC3XX**  
Geneva Stop Plate for RPS



**Cat. No. P190SC3XX**  
Pinnacle Stop Plate for RPS

### Specifications:

**Glass Thickness Range:** 10mm to 12mm  
Toughened Safety Glass

**Construction:** Solid Brass

**Glass Fabrication Required:** Notch in glass

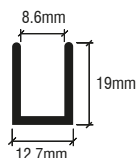
**Includes:** Gaskets, Phillips head & Allen head screws and a hex wrench



You may also need 31P550GSS - Adjustable Foot



# U-Channels



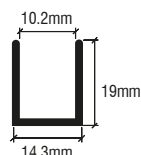
**Cat. No. SDCD516XX**  
Length: 2.49m  
Glass Thickness: 8mm

## Aluminium Deep U-Channel

### Specifications

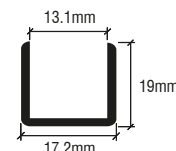
- 2.49m stock lengths
- Deep Pocket Does Excellent Job of Securing Fixed Panels of Glass

- Wet Glazed with Clear Silicone to Secure Glass
- End Caps Offered to Conceal Ends of Channel
- Use Monolithic Toughened Glass



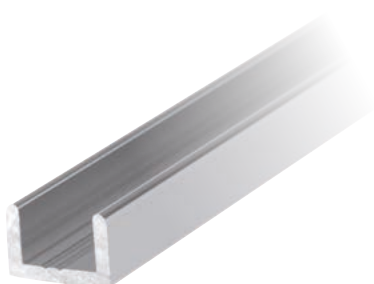
**Cat. No. SDCD38XX**  
Length: 2.49m  
Glass Thickness: 10mm

**Cat. No. SDCD3812XX**  
Length: 3.65m  
Glass Thickness: 10mm



**Cat. No. SDCD12XX**  
Length: 2.49m  
Glass Thickness: 12mm

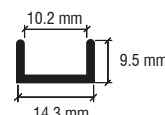
**Cat. No. SDCD1212XX**  
Length: 3.65m  
Glass Thickness: 12mm



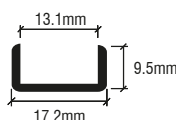
## Aluminium Regular U-Channel

### Specifications

- 2.49m stock lengths
- Wet Glazed with Clear Silicone to Secure Fixed Panels of Glass
- Lower Profile Allows Maximum Glass Exposure
- Use Monolithic Toughened Glass



**Cat. No. SDCR38XX**  
10mm Glass Thickness



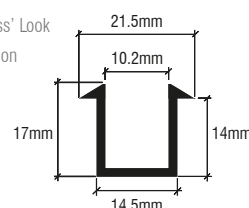
**Cat. No. SDCR12XX**  
12mm Glass Thickness



## Aluminium Recessed U-Channel

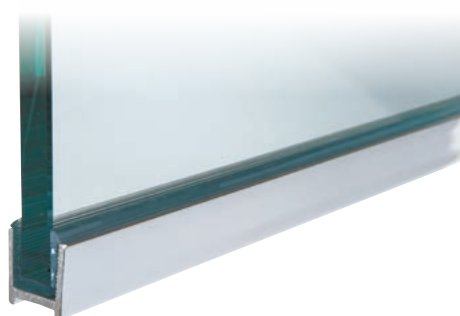
### Specifications

- 2.49m stock lengths
- Ideal for Recessing Glass and Creating the 'All-Glass' Look
- Top of Channel Angled to Assist with Water Deflection
- Top Lip Helps Cover Edge of Tile



**Cat. No. SDCF38XX**  
For 10mm Glass

**Cat. No. SDCF12XX**  
For 12mm Glass



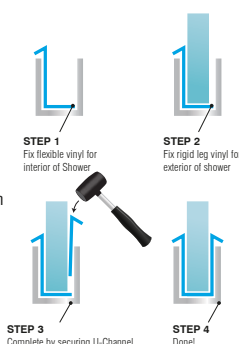
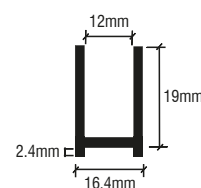
## Aluminium Dry-Glaze U-Channel

### Specifications

- 2.49m stock lengths
- Recess in Bottom Channel Hides Caulk Line
- Clear Vinyl's Secure Glass in Channel and Eliminate the Need for Messy Silicone
- Use Monolithic Toughened Glass

**Cat. No. DUC516XX**  
For 8mm Glass

**Cat. No. DUC38XX**  
For 10mm Glass



**Cat. No. FV4DUC**  
Flexible Vinyl for DUC38 U-Channel  
Glass thickness: 10mm

**Cat. No. RV4DUC**  
Flexible Vinyl for DUC38 U-Channel  
Glass thickness: 10mm

**Cat. No. FV8DUC**  
Flexible Vinyl for DUC38 U-Channel  
Glass thickness: 8mm

**Cat. No. RV8DUC**  
Flexible Vinyl for DUC38 U-Channel  
Glass thickness: 8mm



### End Cap

**Cat. No. SDCEC38XX**  
To fit channel CAT. NO. SDCD38

**Cat. No. SDCEC12XX**  
To fit channel CAT. NO. SDCD12 / DUC38 / DUC516

## Shower Seals

### Translucent Vinyl Bulb Seal

#### Cat. No. PCR8

Length: 2.48m  
Glass Thickness: 8mm

#### Cat. No. PCR10

Length: 2.48m  
Glass Thickness: 10mm

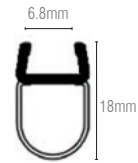


### Translucent Vinyl Bulb Seal

#### Cat. No. PCR8L

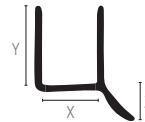
Soft Vinyl Single Leg for Quieter Door Closure

Glass Thickness: 8mm



### Dual Durometer PVC Seal for 6mm Glass

- Can be used as bottom sweep, or vertically on bi-fold doors
- Length: 2.49m
- Snap on application
- Can be used two ways



#### Cat. No. P14WS

Glass Thickness: 6mm  
X = 6mm  
Y = 10mm  
Z = 6mm

#### Cat. No. P880WS

Glass Thickness: 10mm  
X = 10mm  
Y = 14mm  
Z = 6mm

#### Cat. No. P770WS

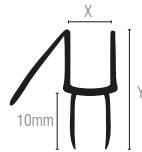
Glass Thickness: 8mm  
X = 8mm  
Y = 12mm  
Z = 6mm

#### Cat. No. P120WS

Glass Thickness: 12mm  
X = 12mm  
Y = 15mm  
Z = 6mm

### Co-Extruded Bottom Wipe with Drip Rail

- Our Most Popular Bottom Sweep
- Snaps on Bottom of Door
- 45° Drip Rail Assists in Deflecting Water Back Into the Enclosure
- Length: 2.49m
- Suggested Gap: 11mm
- Use Monolithic Tempered Glass



#### Cat. No. P914WS

Glass Thickness: 6mm  
X = 6mm  
Y = 16mm

#### Cat. No. P990WS

Glass Thickness: 10mm  
X = 12mm  
Y = 19mm

#### Cat. No. P956WS

Glass Thickness: 8mm  
X = 8mm  
Y = 16mm

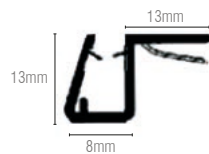
#### Cat. No. P912WS

Glass Thickness: 12mm  
X = 12mm  
Y = 19mm

### Polycarbonate Sweep

#### Cat. No. PCJ8

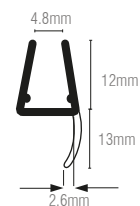
- Length: 2.49m
- Glass Thickness: 8mm



### 'Y' Jamb Seal with Soft leg

#### Cat. No.

- Soft Vinyl Single Leg for Quieter Door Closure
- Length: 2.49m
- Glass Thickness: 6mm and 8mm



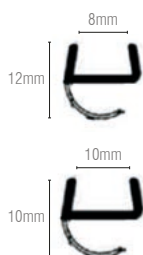
### Translucent Vinyl Seal with Sealing Lip

#### Cat. No. P114WS

Length: 2.49m  
Glass Thickness: 8mm

#### Cat. No. P124WS

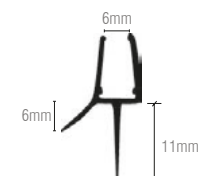
Length: 2.49m  
Glass Thickness: 10mm

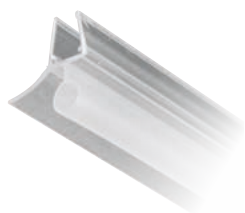


### Clear Co-Extruded Bottom Wipe

#### Cat. No. P102WS

Length: 2.49m  
Glass Thickness: 6mm and 8mm





### Bubble Wipe with Drip Rail

#### Cat. No. P141WS

Length: 2.49m

Glass Thickness: 6mm to 8mm

- Can be used on inswing and outswing doors
- Adhere flat base to glass edge or wall with CRL Very High Bond Tape, such as CAT. NO. AT0401436



### Translucent Silicone Bulb Seal

#### Cat. No. S1LB

Glass Thickness: 8mm

- Can be used on inswing and outswing doors
- Close Gaps from 1.6 to 5mm
- Length: 2.49m
- Adheres using silicone only (not very hi-bond tape)



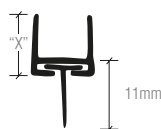
### Clear Bottom Rail With Translucent Wipe

#### Cat. No. P450BR

Length: 2.49m

Glass Thickness: 8mm

'X': 8mm



#### Cat. No. P500BR

Length: 2.49m

Glass Thickness: 10mm

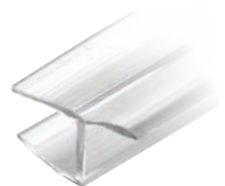
'X': 10mm

#### Cat. No. P660BR

Length: 2.49m

Glass Thickness: 12mm

'X': 12mm



### "H" Jamb With Soft Leg

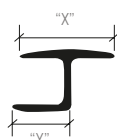
#### Cat. No. PCC8

Length: 2.49m

Glass Thickness: 8mm

'X': 19mm

'Y': 11mm



#### Cat. No. PCC10

Length: 2.49m

Glass Thickness: 10mm

'X': 21mm

'Y': 12mm

#### Cat. No. PCC12

Length: 2.49m

Glass Thickness: 12mm

'X': 21mm

'Y': 12mm



### Translucent Vinyl Bulb Seal

#### Cat. No. SDTB

Without Tape

- Pre-applied VHB tape for easy installation
- Labour savings due to pre-application of tape
- Length: 2.49m



#### Cat. No. SDTBT2

With Pre-Applied Tape

- Pre-applied VHB tape for easy installation
- Labour savings due to pre-application of tape



## Shower Seals



### Translucent Vinyl Double Fin Seal

#### Cat. No. SDTDF

Without Tape

- Can Be Used for Inswing or Outswing Doors
- Length: 2.49m
- Suggested Gap: 8mm
- Glass Thickness: 8mm

#### Cat. No. SDTDF2

With Pre-Applied Tape

- Pre-applied VHB tape for easy installation
- Labour savings due to pre-application of tape



### Translucent Vinyl 'L' Seal

#### Cat. No. SDTL

Without Tape

Suggested Gap: 8mm.  
Glass thickness 'X': 8mm

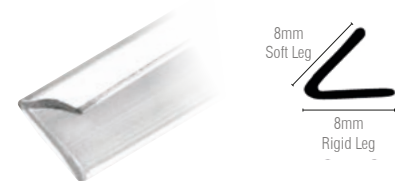
- Can be used on outswing doors only
- Length: 2.49m

#### Cat. No. SDTLT2

With Pre-Applied Tape

Suggested Gap: 10mm.  
Glass thickness 'X': 10mm

- Pre-applied VHB tape for easy installation
- Labour savings due to pre-application of tape



### Translucent Vinyl Edge 'V' Seal

#### Cat. No. SDTS

Without Tape

- Can be used only on doors swinging one way
- Length: 2.49m
- Glass Thickness: 8mm

#### Cat. No. SDTST2

With Pre-Applied Tape

- Pre-applied high-bond tape for easy installation
- Labour savings due to pre-application of tape



### Translucent Vinyl Edge 'V' Seal

#### Cat. No. SDTW

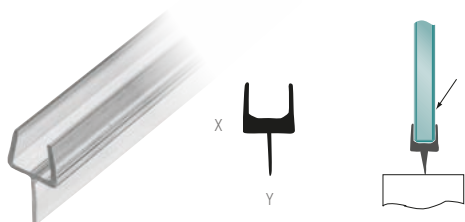
Without Tape

- Can Be Used On in or Out-Swinging Doors
- Suggested Gap: 11mm
- Length: 2.49mm
- Glass Thickness: 8mm

#### Cat. No. SDTWT2

With Pre-Applied Tape

- Pre-applied tape for easy installation
- Labour savings due to pre-application of tape



### One Piece Bottom Rail with Clear Wipe

#### Cat. No. P501BR

One-Piece Bottom Rail With Clear Wipe for 10mm Glass

- Single-Piece Bottom Sweep
- Snaps onto Door Bottom to achieve a seal
- Length: 2.49m
- Suggested gap: 11mm

#### Cat. No. P501BR

- Glass Thickness: 10mm
- X = 11mm
- Y = 11mm

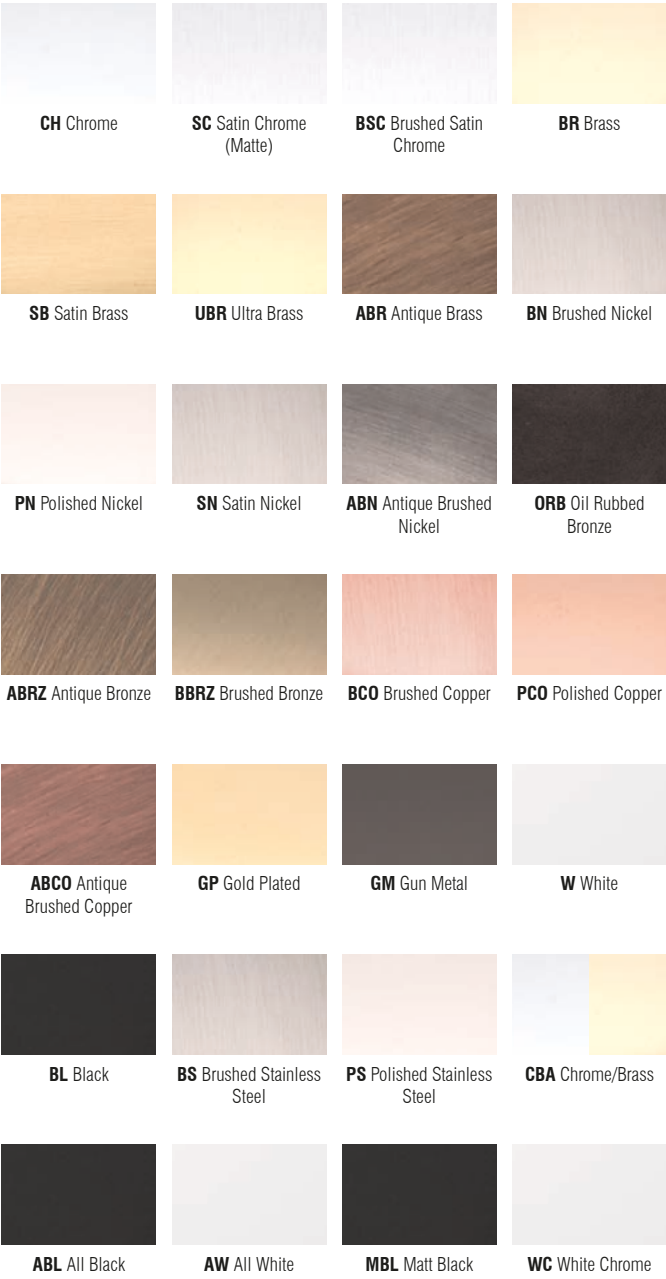
#### Cat. No. P661BR

- Glass Thickness: 12mm
- X = 12mm
- Y = 11mm


# Colour range\*


All CRL Frameless Shower Door products are available in a variety of beautiful stock finish to enhance the décor of the surrounding environments. Add the chosen colour code to a Cat No to complete your product code.

Note: Not all Finishes are available for every product, please call or consult [crlaurence.co.uk](http://crlaurence.co.uk) for product specific colour options.



\* The finishes shown are as close as possible to the actual item. Some images might look a little different when compared to the actual product.





**Clear 90° Magnetic Profile**

- Provides positive door closure
- Mix and match configurations to achieve desired result
- Made of co-extruded plastic with soft magnetic receiver

**Cat. No. PMC8**  
Glass thickness: 6mm to 8mm

**Cat. No. PMC10**  
Glass thickness: 10mm to 12mm






**Clear 45° LH Magnetic Profile**

- Provides positive door closure
- Mix and match configurations to achieve desired result
- Made of co-extruded plastic with soft magnetic receiver

**Cat. No. PMA8**  
Glass thickness: 6mm to 8mm

**Cat. No. PMA10**  
Glass thickness: 10mm to 12mm





**Clear 45° RH Magnetic Profile**

- Provides positive door closure
- Mix and match configurations to achieve desired result
- Made of co-extruded plastic with soft magnetic receiver

**Cat. No. PMB8**  
Glass thickness: 6mm to 8mm

**Cat. No. PMB10**  
Glass thickness: 10mm to 12mm

For 6mm to 8mm thick glass

Angle	Profiles Required	Notes
180°	PMA8 + PMA8	Door swings in one direction only
180°	PMC8 + PMC8	Door swings in both directions
135°	PMA8 + PMC8	Door swings out only
90°	PMA8 + PMB8	Reverse for polarity-door swings out only

For 10mm to 12mm thick glass

Angle	Profiles Required	Notes
180°	PMA10 + PMA10	Door swings in one direction only
180°	PMC10 + PMC10	Door swings in both directions
135°	PMA10 + PMC10	Door swings out only
90°	PMA10 + PMB10	Reverse for polarity-door swings out only

# Colour range

See our range of colour  
finishes overleaf. Keep the flap  
open for easy reference.

Call FREE on 00 800 0421 6144

Fax FREE on 00 800 0262 3299



## **Manchester**

Charles Babbage Avenue  
Kingsway Business Park,  
Rochdale, OL16 4NW, England  
Tel: +44 (0) 1706 863 600  
Fax: +44 (0) 1706 869 860  
[crlaurence.co.uk](http://crlaurence.co.uk)



## **Stuttgart**

Boschstrasse 7  
D-74360 Ilsfeld  
Germany  
Tel: +49 (0) 7062 915 93 15  
Fax: +49 (0) 7062 915 93 16  
[crlaurence.de](http://crlaurence.de)



## **Copenhagen**

Stamholmen 70 Unit B,  
DK-2650 Hvidovre  
Denmark  
Tel: +45 36 72 09 00  
Fax: +45 36 70 33 35  
[crlaurence.dk](http://crlaurence.dk)



## **France**

Boschstrasse 7  
D-74360 Ilsfeld  
Germany  
Tel: +49 (0) 7062 915 93 15  
Fax: +49 (0) 7062 915 93 16  
[crlaurence.fr](http://crlaurence.fr)